

CITRUSDAL AREA PLAN 2017-2022



MESSAGE FROM WARD COUNCILLOR

Many of our citizens exist in a self-perpetuating poverty trap. Very young and poor single mothers struggle to provide nutrition and basic healthcare for their children, often unaware of the basic services available to them. The inadequate availability of skills make it hard to attract jobs to economically depressed areas which, in turn, deprives people of employment and leaves them dependant on the state. Low incomes, poor living conditions and inadequate education levels increase the vulnerability of the poor to diseases such as HIV / Aids and tuberculosis.



After 22 years of democracy inequalities are growing. Our life-supporting ecosystems continue to deteriorate at an alarming rate, unemployment remains high and poverty remains widespread and persists alongside affluence.

Local government is judged by its ability to deliver services, promote socio-economic development and govern effectively. As ward councillor, I am aware of the numerous responsibilities bestowed on the Council to bring about fundamental changes to our region that will have a positive effect on the livelihoods of all our people. Local Government is both the most intimate sphere of government and the one that impacts most on the everyday lives of citizens.

With the approval of this Fourth Generation Integrated Development Plan (IDP), Cederberg Municipality is embarking on a challenging journey. This journey towards excellent local government basically consists of five steps, each representing a level of achievement, from the lowest level of 'survival' to a level of 'actualisation'. I believe however, that we cannot progress to a next more fulfilling level before the needs of the existing level have been met. The five levels are:

- Providing excellent, democratic, transparent, and open government with zero tolerance for corruption at any level
- Getting the basics right. Provide for the most fundamental needs of our citizens by getting the basic service delivery right
- Putting heart into our communities to make them vibrant and safe. Provide excellent community facilities efficiently and effectively in order to provide places and services through which citizens can take their opportunities
- Helping our citizens to be successful by enabling opportunities and driving local economic growth
- Creating a better future for all by taking a firmly sustainable approach to our environment.

From the municipality's side we will commit to:

- A professional service to our town, settlement and rural area;
- Create a platform for local economic development that can result in job creation by making our town more investment friendly;
- Create opportunities so that ordinary citizens can take responsibility and break free from the cycle of poverty;
- Good financial planning and control, free of any form of corruption;
- The spending of municipal funds in a responsible and transparent manner; and
- Be a productive workforce with a high work ethic and a high standard of customer care.

I wish to invite all councillors, officials, citizens, business, government and non-government organisations to become part of this journey.

Join hands with us - **LET'S MAKE IT HAPPEN!**

Ward Councillor Raymond Pretorius

Ward 2 – Citrusdal

Table of Contents

1. INTRODUCTION AND PURPOSE OF THE AREA PLAN	6
1.1 GENERAL.....	6
1.2. STRUCTURE OF THE DOCUMENT	6
2. CITRUSDAL HISTORICAL BACKGROUND.....	7
3. DEVELOPMENT PERSPECTIVE	7
4. WARD COMMITTEE INFORMATION	9
Table 1: Ward Committee Information.....	9
5. CENSUS SURVEY 2011	9
5.1. Population of Citrusdal.....	9
Table 2: Population.....	9
5.2. Population size for towns and rural areas.....	9
Table 3: Population size and rural areas	9
5.3. Percentage gender distribution per town.....	10
Table 4: Percentage gender distribution per town	10
5.4. Age distribution per category.....	10
Table 5: Age distribution per category	10
5.5. Average household size per ward.....	10
Table 6: Average Household size per ward.....	10
5.6. Dwelling types per town	11
Table 7: Dwelling types per town	11
5.7. Official Employment Status.....	11
Table 8: Official Employment Status.....	11
5.8. Percentage monthly income per household	11
Table 9: Percentage monthly income per household.....	11
Figure2: Annual Income per Household	11
5.9. Human Settlement Overview (Housing)	12
Table 10: Human Settlement Overview.....	12
5.10 Households' source of energy	12
Table 11: Households' source of energy.....	12
5.11. Households' source of refuse removal	12
Table 12: Households' source of refuse removal	12
5.12. Households' source of water.....	12
Table 13: Households' source of water	12

5.13. Educational Institutions per person.....	12
Table 14: Educational Institutions per person	12
6. SERVICES: CAPACITY AND BACKLOGS.....	13
Table 15: Services Capacity and Backlogs	15
Table 16: Action Plan	16
7. COMMUNITY PRIORITIES AND ACTION PLANS.....	17
7.1 Citrusdal	17
7.1.1. Priorities Of Citrusdal	17
Table 17: Top Priorities of Citrusdal	19
7.1.2. Other Needs Of Citrusdal	21
Table 18: Other Needs	21
7.1.3. Citrusdal Needs For Sector Departments	21
Table 19: Needs for Sector Departments.....	22
7.2. SECTOR INVESTMENT.....	22

1. INTRODUCTION AND PURPOSE OF THE AREA PLAN

1.1 GENERAL

Area-based planning is an initiative that complements the IDP process by focussing and zooming in on communities. It sets out a strategy for proper planning and sustainable development of an area within the local governing body and for a specified timeframe. Communities in the sense are represented by settlements and wards. Wards are often demarcated in a way that divides areas that in reality represent coherent communities or settlements. Cederberg Municipality decided to adopt an approach that focusses on sensible geographical areas, simultaneously considering wards to facilitate that ward planning is not neglected. To achieve this several wards are combined for each area plan to echo the area-based approach in a practical manner.

The focus of this Area Plan has been identified as Citrusdal (Ward 2). With regards to this, the approach represents the effort to address integrated planning at a sub-municipal level. The importance of the role of the ward and ward committees is addressed in the second section of each Area Plan. It also contains the community inputs and the results of the public meetings pertaining to those wards.

1.2. STRUCTURE OF THE DOCUMENT

As mentioned in the previous paragraph, when representing planning and community participation at local level, one has to present information per town and per ward.

This can be challenging as it interrupts the natural flow from analysis and community participation towards projects. To maintain clarity however, everything that can be linked to a town was grouped in the town section and everything linked to a ward approach is presented in the ward section.

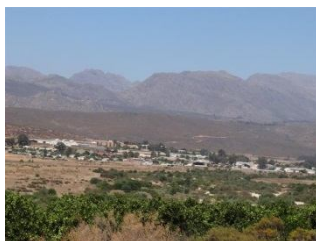
2. CITRUSDAL HISTORICAL BACKGROUND

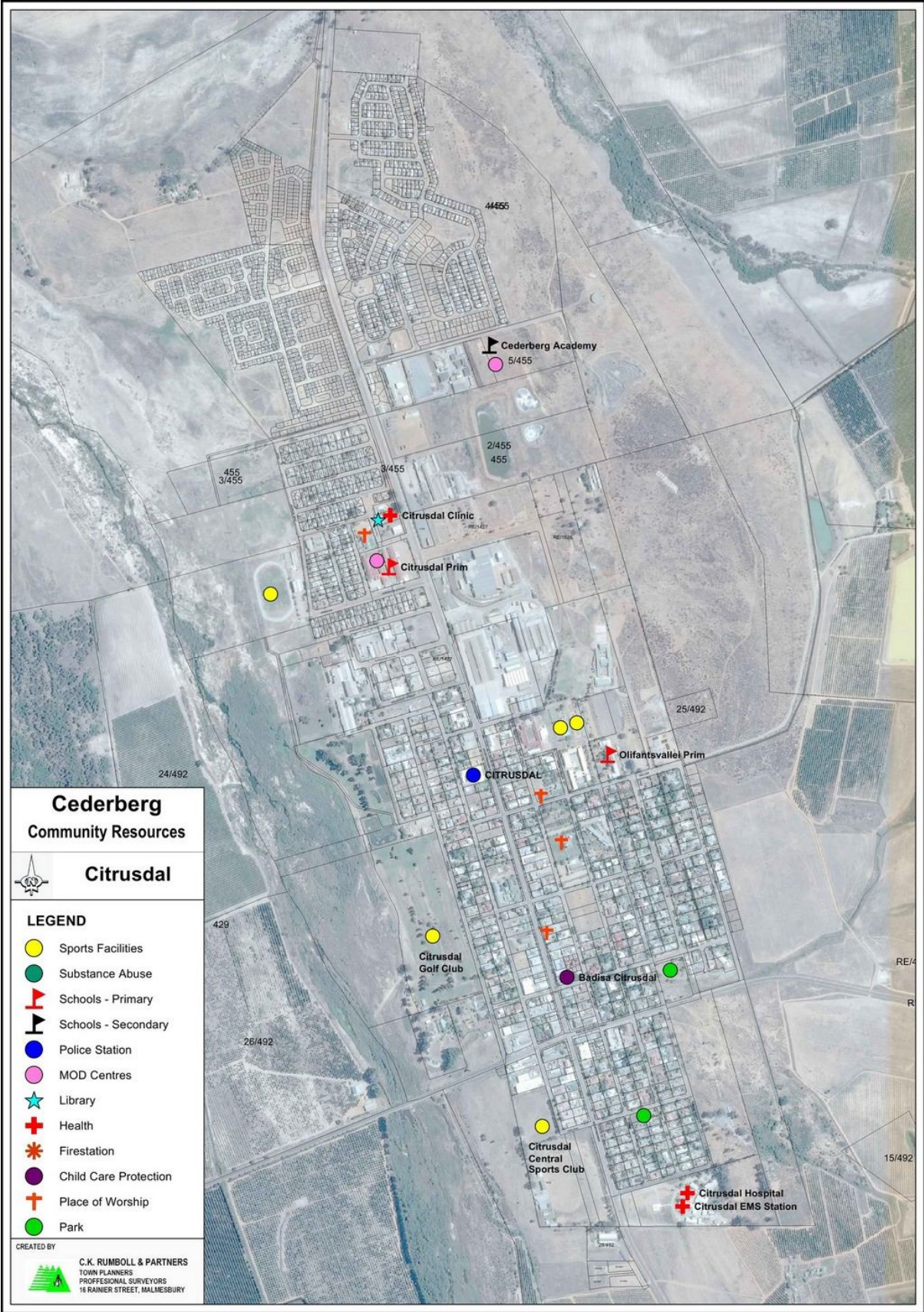


The town of Citrusdal was established in 1916 by the Dutch Reformed Church with the intention to serve the upper Olifants River valley. The church bought a portion of the Middelpost farm on which a township was laid out. The town council was established in 1957. Citrusdal is situated at the base of the Cederberg Mountains. Agriculture is a dominated industry hence the town received its name from the citrus industry. Natural hot water springs occur in the area, serving as a nice getaway for city dwellers. The oldest orange tree can be found on the Hex River farm and is estimated to be approximately 250 years old. The town itself has a small museum that focusses on the history of the town, the first pioneers and the local Khoisan tribe.

3. DEVELOPMENT PERSPECTIVE

Citrusdal originated as a service centre for the agricultural sector in the Upper Olifants River valley. The citrus industry is the main source of income in the town's hinterland. Because of the labour-intensive nature of the activity, the town experienced an influx of seasonal workers. Unemployment has increased along with a rise in population numbers. The local export economy is vulnerable to the fluctuating exchange rate of the Rand and the concomitant decline in export value has negative implications for the economic base of the town. The nearby hot spring presents some tourism and recreation potential. However, only limited growth is expected here.





**Cederberg
Community Resources**

Citrusdal

- LEGEND**
- Sports Facilities
 - Substance Abuse
 - Schools - Primary
 - Schools - Secondary
 - Police Station
 - MOD Centres
 - Library
 - Health
 - Firestation
 - Child Care Protection
 - Place of Worship
 - Park

CREATED BY
C.K. RUMBOLL & PARTNERS
 TOWN PLANNERS
 PROFESSIONAL SURVEYORS
 16 RAINIER STREET, MALMESBURY

4. WARD COMMITTEE INFORMATION

MEMBER	SECTOR	CONTACT NR	EMAIL
Raymond Pretorius	Ward Councillor	0724415416	raymondp@cederbergraad.co.za
Betty Da Silva	Ward Assistant	0789329747	elizabethd@cederbergraad.co.za
Nicolaas Waterboer	Churches	0791205978	N/A
Willem Andrew	Crime	0832328348	N/A
Jowano Zimri	Sport/Culture	0749615095	N/A
Shireez Hector	Health	0815195937	N/A
Maria Lewin	Women/Elderly	0721570275	N/A
Petrus Smith	Education & Youth	0715999907	N/A
Abraham Lategan	Geographical	0733457815	Abrahamlategan50@gmail.com
Jolanda Basson	Tourism	0824242915	inside@citrusdal.info
Roelof Hugo	Chamber of Commerce	0828740411	Roelf.hugo@netactive.co.za

Table 1: Ward Committee Information

5. CENSUS SURVEY 2011

5.1. Population of Citrusdal

Town	Total
Citrusdal	7177

Table 2: Population



5.2. Population size for towns and rural areas

Population Group	Number	Percentage
Black African	1121	15.61%
Coloured	4951	68.98%
Indian or Asian	13	0.18%
White	1044	14.54%
Other	49	0.68%
Total	7177	

Table 3: Population size and rural areas

5.3. Percentage gender distribution per town

Town	Female	Male
Citrusdal	50.7%	49.3%



Table 4: Percentage gender distribution per town

5.4. Age distribution per category

Town	0-9 years	10 – 19 years	20-29 years	30-39 years	40-49 years	50-59 years	60-69 years	70-79 years	80+ years
Citrusdal	1187	1174	1595	1057	965	602	331	174	93

Table 5: Age distribution per category

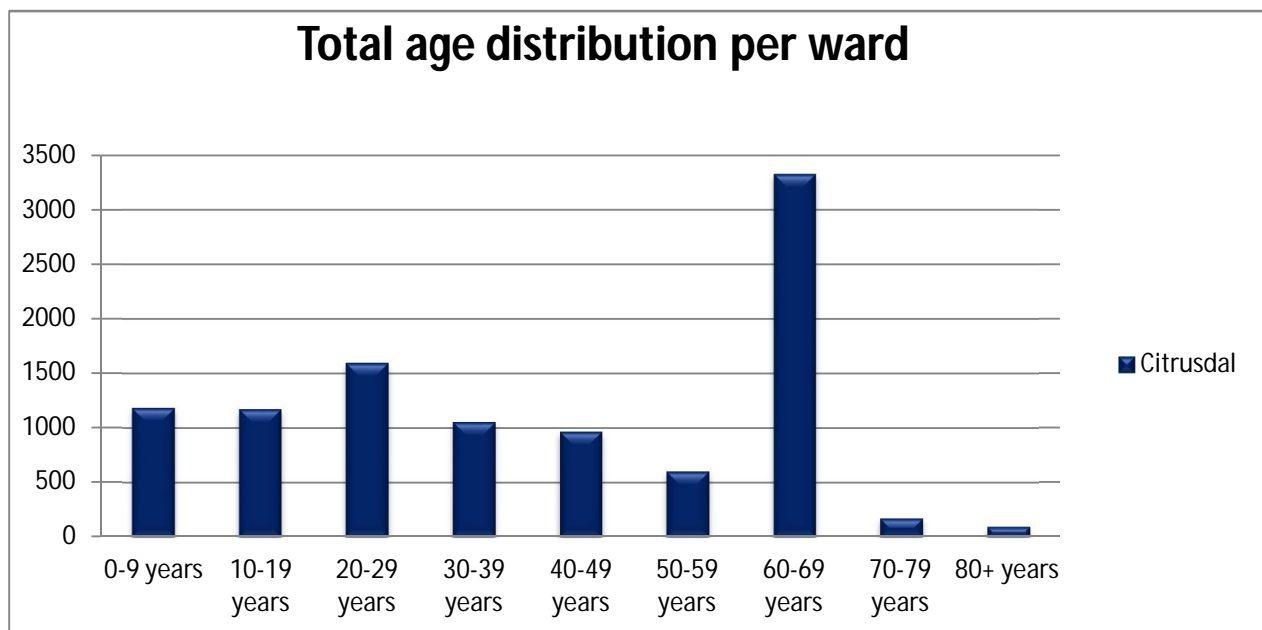


Figure 1: Total age Distribution per household

5.5. Average household size per ward

Town	Number of households	Households consisting of 2 people	Households consisting of 4 people
Citrusdal	1 570 HHs	40.1%	33.6%



Table 6: Average Household size per ward

5.6. Dwelling types per town

Town	Brick House	Traditional dwelling/ structure	Flat/ apartment	Cluster house in complex	Townhouse (semi-detached house in a complex)	Semi-detached	House/ room in backyard	Flatlet on large property	Informal shack on property	Informal shack in squatter	Caravan/ Tent	Other
Citrusdal	1286	6	88	3	11	22	26	3	161	299	0	14

Table 7: Dwelling types per town

5.7. Official Employment Status

Town	Employed	Unemployed	Discouraged work-seeker	Other not economically active	Age less than 15 years	N/A
Citrusdal	2648	308	47	2016	0	2158

Table 8: Official Employment Status

5.8. Percentage monthly income per household

Town	No Income	R1 – R9 600	R 9 601 – R 38 200	R38 201 – R 153 800	R153 801 – R614 400	R 614 401 – R 2 457 600	R 2 457 601+
Citrusdal	179	87	536	788	294	33	3

Table 9: Percentage monthly income per household

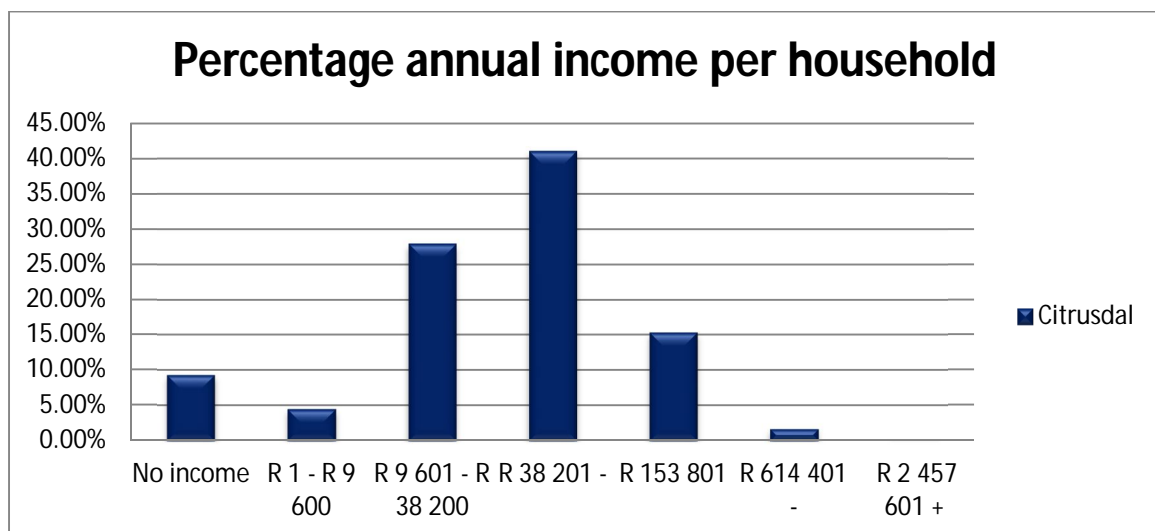


Figure 2: Annual Income per Household

5.9. Human Settlement Overview (Housing)



Town	Waiting list	Number of Units	Financial year
Citrusdal	1723	226	2018/19 – 2021/22

Table 10: Human Settlement Overview



5.10 Households' source of energy

Town	Electricity	Gas	Paraffin	Candles	Solar	None	Unspecified	N/A
Citrusdal	1534	11	151	214	3	5	0	0

Table 11: Households' source of energy

5.11. Households' source of refuse removal

Town	Removed by Municipality once per week	Removed by private company less often	Communal refuse dump	Own refuse dump	No rubbish disposal	Other
Citrusdal	1830	39	4	31	15	1

Table 12: Households' source of refuse removal



5.12. Households' source of water

Town	Regional / Local water scheme operated by Municipality	Borehole	Spring	Rain Water Tank	Dam/ Pool/ Stagnant Water	River / Stream	Water vendor	Water Tank	Other	N/A
Citrusdal	1859	3	0	4	22	3	0	13	16	0

Table 13: Households' source of water



5.13. Educational Institutions per person

Town	Pre-School	Ordinary School	Special School	Further Education and Training College FET	Other College	Higher Educational Institution University/ University of Technology	Adult Basic Education and Training Centre / ABET Centre	Literacy classes	Home based education/ Home Schooling	N/A
Citrusdal	27	1239	5	37	24	39	65	10	2	5730

Table 14: Educational Institutions per person

6. SERVICES: CAPACITY AND BACKLOGS

Municipal Service in Citrusdal				
Water	1 570 HH	97.1%	<ul style="list-style-type: none"> • 97.1% of HHs receive their water from the municipality • HHs with access to water represents 11.2% of all HHs. • 1525 HHs receive their water from the municipality. • 1 HH source their water from a borehole • 12 HHs from a dam/pool/stagnant water • 13 from a water tanker 	High Water loses
Sanitation	1 570 HH	92.7%	<ul style="list-style-type: none"> • HHs with sanitation services in the ward represents 10.7% of all HH. • 92.7% of HHs have access to sanitation services above the minimum service level. • 51 HHs have no access to sanitation services. • 40 of HHs use bucket toilets 	Backlog: ± 108 HHs <ul style="list-style-type: none"> • 51 HHs with no provision of toilets • 40 HHs utilize bucket toilets • 17 HHs other toilet provisions
Electricity for lighting	1 570 HH	96.2%	<ul style="list-style-type: none"> • HHs with electricity in the ward represents 11.1% of all HHs. • 3 of HHs use paraffin for lighting purposes • 50 of HHs use candles for lighting purposes • 3 HHs utilizes solar 	Backlog: ± 55 HHs <ul style="list-style-type: none"> • 2 HHs with no Electricity • 53 HHs using paraffin & candles

			energy	
Refuse Removal	1 570 HH	97.7%	<ul style="list-style-type: none"> • 97.6% of HHs receive refuse removal services above the minimum service level. • HHs with refuse removal services represents 11.3% of all HH. • 25 HHs use their own refuse dump. • 7 HHs have no access to refuse removal services 	Backlog: ±32 HH <ul style="list-style-type: none"> • 7 HHs with no provision of service • 25 HHs utilising own refuse dump.
Roads & Storm Water				
Housing	1 268 formal Housing structures		<ul style="list-style-type: none"> • 80.7% of the housing structures is formal housing structure • 9.1% of structures are informal structures • 1.8% is in an informal settlement • 7.3% is shacks in the backyard • The 9.1% informal structures represent 9.6% of all informal structures within the municipal area. 	Backlog: ± 143 HHs <ul style="list-style-type: none"> • The backlog include backyard dwellers and structures in informal settlements
Community Facilities				
Libraries	2		TP Meyer Library (Bohemia street) Citrusdal Library (Muller street 12)	
Services by other spheres of government				
Multi-Purpose Centre	1		Citrusdal Thusong Centre	<ul style="list-style-type: none"> • General maintenance of the facility • Lack of proper

				control and security <ul style="list-style-type: none"> No space for small group consultation meetings
Hospitals / Clinics	1 1		Citrusdal District Hospital Citrusdal Clinic and EMS	
Social Services			<ul style="list-style-type: none"> <i>BADISA</i>: Renders social work services in Citrusdal. Badisa offices are in Citrusdal at the museum Frequency of service: Daily from Monday to Friday. <i>Department Social Development</i>: Renders probation and child protection services to farm areas. Department provide services from regional office in Vredendal Frequency of service: Daily from Monday to Friday. 	•
Schools	2		Schools: <ul style="list-style-type: none"> Citrusdal Primary Citrusdal High School 	
Police Station	1		Citrusdal SAPS – Voortrekker Street 96	

Table 15: Services Capacity and Backlogs

The following action plan addresses the backlogs in Citrusdal mentioned in the table above:

	Challenges/Backlog	National Target (Yes/No)	Rural Area (Yes/No)	Informal Settlement (Yes/No)	2017/18	2018/19	2019/20
Water	High water losses	Yes	Yes	Yes	50 000	50 000	50 000
Sanitation	Backlog: ± 108 HHs <ul style="list-style-type: none"> • 51 HHs with no provision of toilets • 40 HHs utilize bucket toilets • 17 HHs other toilet provisions 				468 000	468 000	468 000
Electricity for lighting	Backlog: ± 55 HHs <ul style="list-style-type: none"> • 2 HHs with no Electricity • 553 HHs using paraffin and candles 	Yes	Yes	Yes			797 500
Refuse Removal	Backlog: ±32 HH <ul style="list-style-type: none"> • 7 HHs with no provision of service • 25 HHs utilising own refuse dump. 	Yes	No	Yes	32		
Roads & Storm Water	<ul style="list-style-type: none"> • Rehabilitation and resurfacing backlog – funding constrains • Tarring of gravel roads backlog – funding constrains. 	Yes	No	Yes	N/A	N/A 1 km	N/A 3 km

Table 16: Action Plan

7. COMMUNITY PRIORITIES AND ACTION PLANS

7.1 Citrusdal

The municipality embarked on a door-to-door survey to establish the needs of the communities. The Ward Councillor of Ward 2 together with the ward committee members have prioritised the needs that the community have identified. The top 10 priorities for Citrusdal are as follow. Other needs are also listed as well as the needs that are the responsibility of Sector Departments:

7.1.1. Priorities of Citrusdal

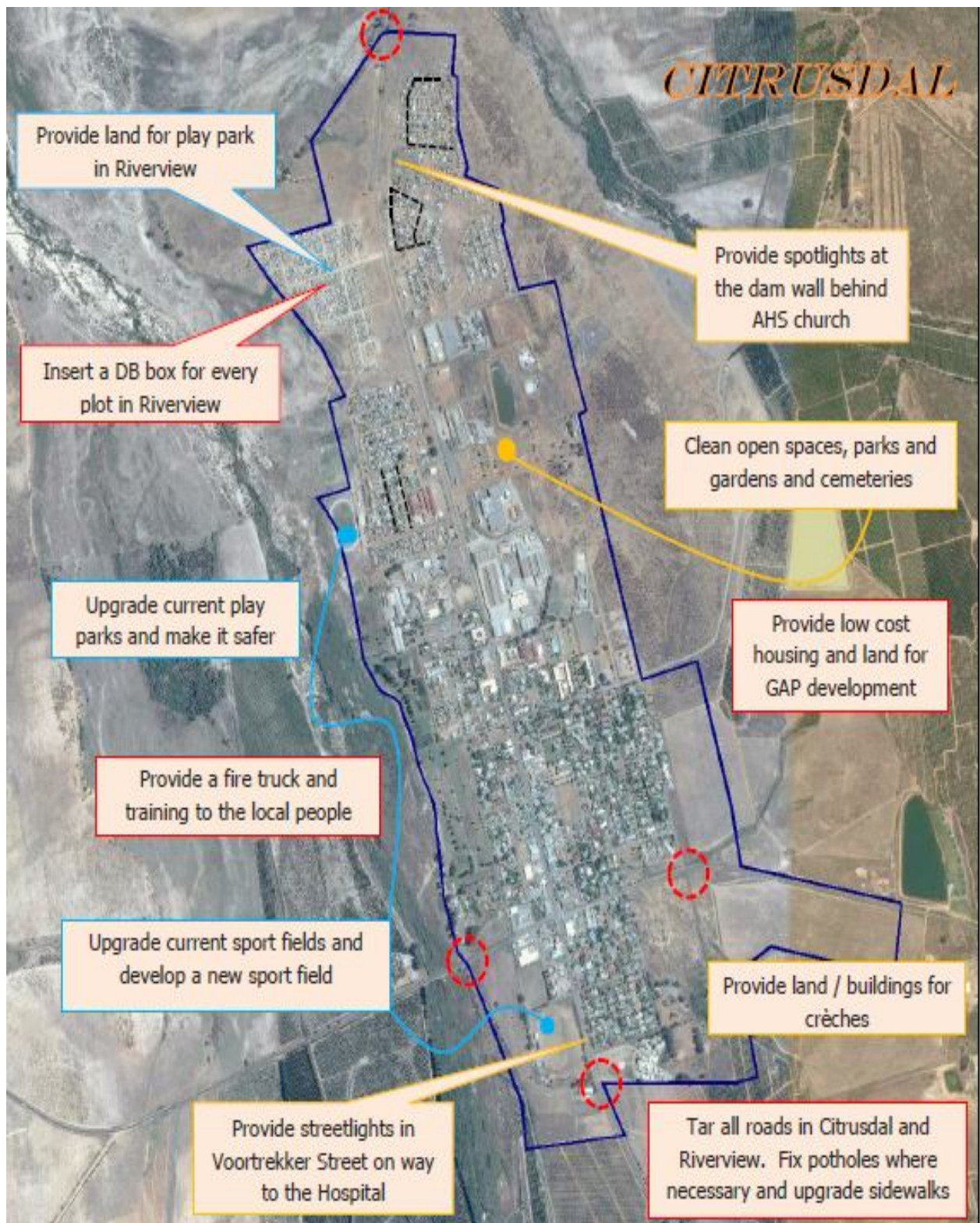
CITRUSDAL IDP PRIORITIES (MUNICIPAL MANDATES) 2017			CAPEX/ OPEX	BUDGET					ADDITIONAL COMMENTS
RANK	PRIORITY	DESCRIPTION		2017 /18	2018 /19	2019 /20	2020 /21	2021 /22	
1	Housing	Provide low cost housing and land for GAP development	Capex	R 25 580 000					Citrusdal is on the approved 2017/18 Housing Pipe Line for service sites.
2	Electrification of Riverview	Insert a DB box for every plot in Riverview							Municipal By-laws only allowed for one electrical connection per plot. DoE already funded the electrification of the area and will not fund a second connection. For a second DB per plot the cost will be R8 000/plot plus the possibility of upgrading of the network,
3	Fire Services	Provide a fire truck and training to the local people	Capex	R1500 000					External Funding
4	Roads	Tar all roads in Citrusdal and Riverview. Fix potholes where necessary. Upgrade sidewalks. Road to cemetery is a one way, make provision for two	Opex	R 400 000	R 400 000				Internal funding

CITRUSDAL IDP PRIORITIES (MUNICIPAL MANDATES) 2017			CAPEX/ OPEX	BUDGET					ADDITIONAL COMMENTS
RANK	PRIORITY	DESCRIPTION		2017 /18	2018 /19	2019 /20	2020 /21	2021 /22	
		way.							
5	Creches	Provide land and/or buildings for creches	Capex	R 400 000					Internal Funding for servicing of the site
6	Beautification of town	Beautify entrance of town, plant trees as you enter from N7 and also among the sidewalks out of town to residential areas. Clean open spaces, parks and gardens, cemeteries, also landscape cemeteries.	Capex			R 190 000			Internal funding
7	Street lights and spot lights	Provide spotlights at the dam wall behind AHS church. Provide streetlights in dark areas, especially in Voortrekker Street on way to hospital, open space at Riverview Chris Hani Street, open space between houses in Lang street/Suikerbos Ave/Nova street, open space at Top Dop, Schalk Patience Street..	Opex	R 30 000					Internal funding
8	Speedbumps	Provide speedbumps on Olien Avenue, Protea Single, Seder Street, Denne Street, Fynbos Avenue and Schalk Patience Street.. Also refurbish current speedbumps.	Opex	R 40 000	R 40 000				Internal Funding

CITRUSDAL IDP PRIORITIES (MUNICIPAL MANDATES) 2017			CAPEX/OPEX	BUDGET					ADDITIONAL COMMENTS
RANK	PRIORITY	DESCRIPTION		2017 /18	2018 /19	2019 /20	2020 /21	2021 /22	
9	Playpark	Upgrade current playpark and make it safer. Provide land for playpark in Riverview.	CAPEX/OPEX	-	R 80 000	R 130 000			Upgrade of current playpark will be done in 2018/19 and the new playpark in 2019/20
10	Sport fields	Upgrade current Sport field and develop a new sport field.	Capex	R 7 679 000	R 500 000				MIG Funding

Table 17: Top Priorities of Citrusdal

The Spatial Mapping of the abovementioned projects are as follows:



7.1.2. Other Needs of Citrusdal

The other needs are listed in no particular order:

OTHER NEEDS OF CITRUSDAL – 2017		
NUMBER	NEED	DESCRIPTION
A	Street Names	Provide street name boards for all streets in Citrusdal
B	Land for Emerging Farmers	Provide land for emerging farmers
C	Partnerships with Commercial Farmers	Facilitate partnerships with commercial farmers
D	Water Leaks	Maintain water leaks
E	Access to water	Improve access to water/far from nearest tap - Informal Settlements
F	Low Water Pressure	Fix low water pressure - Additional borehole to be connected
G	Swimming Pool	Build a recreational swimming pool
H	Waste Bins	Provide more wheelie bins
I	Clean Drains	Clean gutters and drains
J	Storm Water channel curbs	Provide Storm Water channel curbs
K	Scholar Patrol	Assist with Scholar Patrol at Topdog
L	Job Creation	Provide more jobs for the unemployed
M	Skills Development Programmes	Provide and/or assist with skills development programs for the youth
N	Drug Abuse	Combat drug and substance abuse
O	Youth Café	Assist with a youth café for the town
P	Gym	Assist with a building for gym for the youth
Q	Night shelter	Assist with a night shelter for the homeless
R	Recycling	Assist with recycling

Table 18: Other Needs

7.1.3. Citrusdal Needs for Sector Departments

CITRUSDAL IDP PRIORITIES (OTHER GOVERNMENT DEPARTMENTS) 2017		
Number	GOVERNMENT DEPARTMENT RESPONSIBLE	PRIORITY
1	Department of Education	Provide after school facilities
		Provide and/or support Adult Education (ABET)

2	Department of Health	Enlarge the capacity of the clinic
		Make provision for other languages at the clinic
3	Department of Agriculture	Provide support to small farmers
4	Department of Community Safety	Provide a satellite police station at Riverview
5	Department of Economic Development & Tourism	Provide assistance in terms of a building for the Tourism Office
		Look at the possibility of processing citrus peels
		Assist with training for tour guides
6	Department of Sport/Arts & Culture	Assist with the functioning of the museum
		Assist with funding for Curios Manufacturing at the Museum
		Assist with a youth café

Table 19: Needs for Sector Departments

7.2. SECTOR INVESTMENT

The summary of infrastructure and capital related projects, as classified in the Estimates of Provincial Revenue and Expenditure (EPRE 2017) are as follows:

- i. The **Department of Transport and Public Works** have **4 infrastructure and/or capital expenditure projects** listed over the MTEF for implementation with a budgeted allocation **value of R37 million** over the period 2017/18 to 2019/20. All 4 projects are classified to achieve 'Economic Affairs' outcomes – in other words, investment aims to support economic outcomes. The nature of the projects includes refurbishments and rehabilitations; and
- ii. The **Department of Health** listed **6 infrastructure and/or capital expenditure projects** with a total MTEF **budget of R550 000** aiming to achieve 'Health' outcomes. The projects include investment in health technology, and upgrades and additions. No new infrastructure is planned for the MTEF period.

The specific projects listed in the Budget EPRE 2017 are as follows:

Number of Infrastructure Projects	Project Name	Type of Project	Economic Classification [e.g. outcome focus areas]
	CI830012: Citrusdal - Citrusdal Hospital - Upgrade and Additions to Children's Ward, EC	Hospital - District	Health

Number of Infrastructure Projects	Project Name	Type of Project	Economic Classification [e.g. outcome focus areas]
Western Cape: Department of Health	and Calming Room		
	CI810065: Citrusdal - Citrusdal Clinic - Upgrade and Additions	PHC - Clinic	Health
	CH810065: Citrusdal - Citrusdal Clinic - HT - Upgrade and Additions	Health Technology	Health
	CH830012: Citrusdal - Citrusdal Hospital - HT - Upgrade and Additions of Children's Ward, EC and Calming Room	Health Technology	Health
	CO830012: Citrusdal - Citrusdal Hospital - OD - Upgrade and Additions of Children's Ward, EC and Calming Room	Organisational Development	Health