

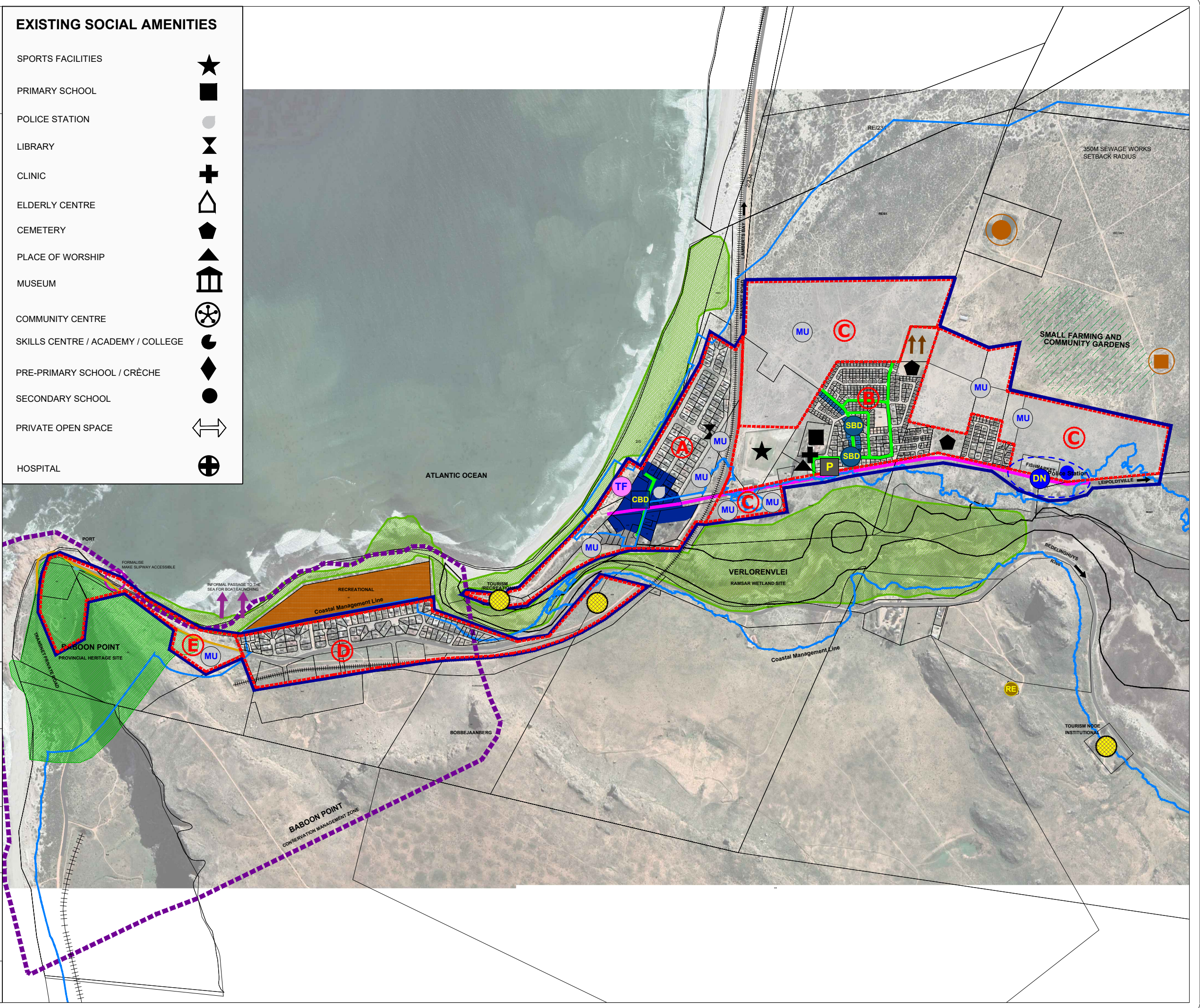


LEGEND

- URBAN EDGE
- LAND USE DEVELOPMENT ZONES
- TOURISM FACILITY
- MIXED USE
- CENTRAL BUSINESS DISTRICT
- SECONDARY BUSINESS DISTRICT
- DEVELOPMENT NODE
- PARKING
- INSTITUTIONAL FACILITY
- SPORTS & RECREATIONAL FACILITY
- CEMETERY EXPANSIONS
- TOURISM NODE
- NATURAL OPEN SPACE SYSTEM
- BABOON POINT PROVINCIAL HERITAGE SITE
- BUFFER AREA AROUND BABOON POINT PHS
- COASTAL MANAGEMENT LINE
- TOURISM / HISTORICAL ROUTES AND ACTIVITY STREET
- INFRASTRUCTURE
- INTERNAL COLLECTORS
- ACTIVITY AXES
- ACTIVITY STREETS
- RAILWAY
- EXISTING RESERVOIR
- EXISTING WASTE SITE
- EXISTING WASTE WATER TREATMENT WORKS

EXISTING SOCIAL AMENITIES

- SPORTS FACILITIES
- PRIMARY SCHOOL
- POLICE STATION
- LIBRARY
- CLINIC
- ELDERLY CENTRE
- CEMETERY
- PLACE OF WORSHIP
- MUSEUM
- COMMUNITY CENTRE
- SKILLS CENTRE / ACADEMY / COLLEGE
- PRE-PRIMARY SCHOOL / CRÈCHE
- SECONDARY SCHOOL
- PRIVATE OPEN SPACE
- HOSPITAL



PROJECT:
CEDERBERG
SPATIAL DEVELOPMENT FRAMEWORK

CLIENT:
CEDERBERG
MUNICIPALITY

ELANDS BAY
SPATIAL DEVELOPMENT
LAND USE PROPOSALS

PREPARED BY:
C.K. RUMBOLL & PARTNERS
TOWN & REGIONAL PLANNERS
16 RAINIER STREET, MALMESBURY

AREA:
CEDERBERG

DATE:
MAY 2023