

DEPARTMENT OF LAND REFORM AND RURAL DEVELOPMENT PRESENTATION

CEDERBERG MUNICIPAL COUNCIL MEETING

Date: 28 MAY 2025

Presenter: MR A. BOOYSEN

DIRECTORATES:

SPLUM: DIRECTOR, Mr A. HAY

NARYSEC: DIRECTOR, Mr N. MGOQI

RID: DIRECTOR, Ms N. NTSHONA

TRI: DIRECTOR, Ms T. XASO



land reform &
rural development

Department:
Land Reform and Rural Development
REPUBLIC OF SOUTH AFRICA



INDEX

1. DLRRD ORGANOGRAM
2. DLRRD MANDATE
3. SPATIAL PLANNING AND LAND USE MANAGEMENT (SPLUM)
4. RURAL DEVELOPMENT: NATIONAL RURAL YOUTH SERVICE CORPS (NARYSEC) & RURAL INFRASTRUCTURE DEVELOPMENT (RID)
5. TENURE REFORM IMPLEMENTATION (TRI)
6. INTERVENTIONS
7. CONCLUSION



land reform &
rural development

Department:
Land Reform and Rural Development
REPUBLIC OF SOUTH AFRICA



DLRRD ORGANOGRAM

MINISTER

DEPUTY MINISTER

DIRECTOR GENERAL

PROGRAMMES

DEPUTY DIRECTOR GENERALs

SPATIAL PLANNING &
LAND USE MANAGEMENT

LAND REDISTRIBUTION
& TENURE REFORM

RURAL
DEVELOPMENT

COMMISSION ON RESTITUTION
OF LAND RIGHTS

CORPORATE
SUPPORT SERVICES

PROVINCIAL CHIEF DIRECTOR

PROGRAMME DIRECTORATES:
DIRECTORs

DISTRICT: WEST COAST

SPLUM

SLA

PM

TRI

LDS

NARYSEC

RID



DLRRD MANDATE

DISTRICT: WEST COAST

SPATIAL PLANNING &
LAND USE MANAGEMENT

STRATEGIC LAND
ACQUISITION

TENURE REFORM
IMPLEMENTATION

PROPERTY
MANAGEMENT

LAND DEVELOPMENT
SUPPORT

NARYSEC

RURAL INFRASTRUCTURE
DEVELOPMENT



land reform &
rural development

Department:
Land Reform and Rural Development
REPUBLIC OF SOUTH AFRICA



SPATIAL PLANNING AND LAND USE MANAGEMENT: PROGRAMME MANDATE

- **National Legislation:** Spatial Planning and Land Use Management Act, Act 16 of 2013 (SPLUMA) / SPLUM Regulations: Land Use Management and General Matters, 2015 / Spatial Data Infrastructure Act (SDI) / National Environmental Management Act (NEMA)
- **Provincial Legislation:** Land Use Planning Act 2014 (LUPA)
- The Provincial SPLUM Office plays a key role in the implementation, monitoring, support and oversight of the key legislation (i.e. through support to municipalities/ coordinating IGR and stakeholder relationships in the Province and with Municipalities/ and support within the PSSC)
- SPLUM Programme and Project Management Support is rendered to Provincial Sector Departments, Municipalities, and also, to the National SPLUM Office in terms of reporting, to ensure that spatial planning and land use management responsibilities are discharged
- Municipal Support on Spatial Planning, Land Use Management, GIS and Drone Interventions, are rendered as per individual requests from Municipalities, and as per approval between the Provincial and National SPLUM Office.

OUTCOME
2

Spatial Transformation and Effective Land Administration

PROGRAMME
6

Land Administration



land reform &
rural development

Department:
Land Reform and Rural Development
REPUBLIC OF SOUTH AFRICA

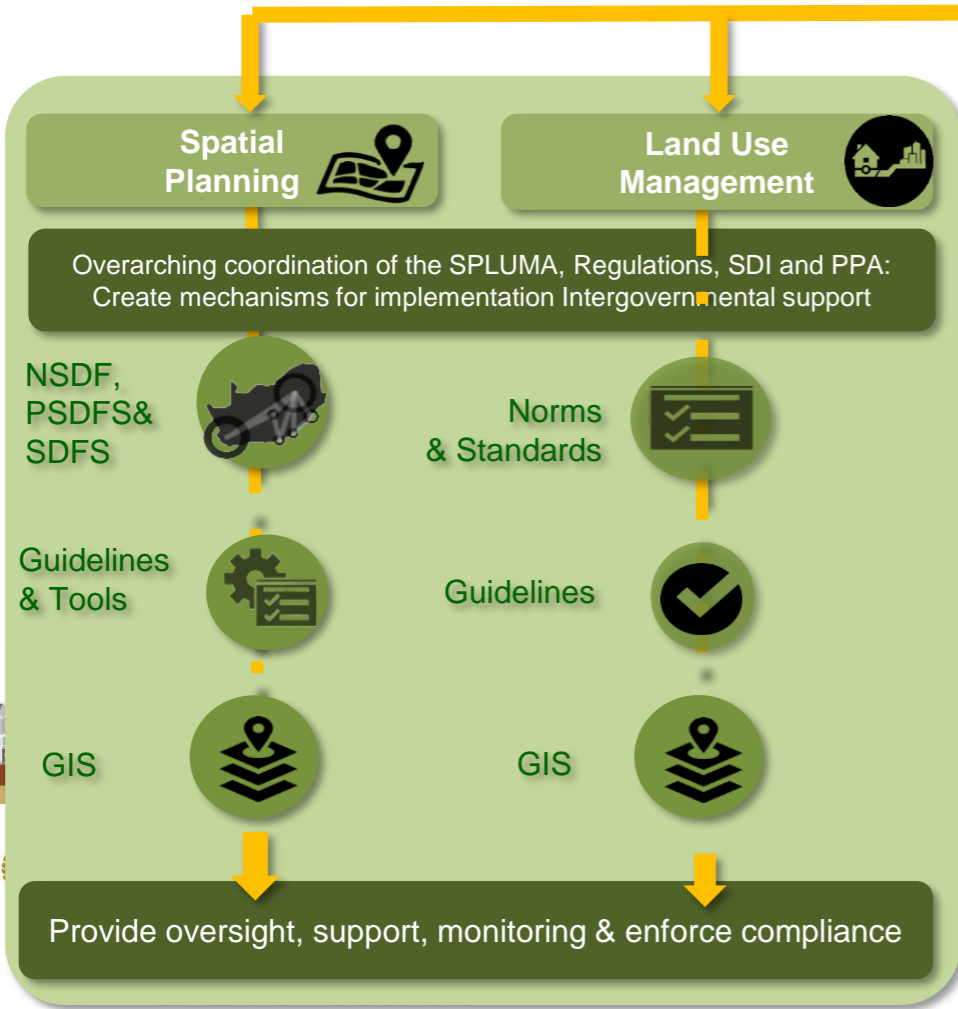


SPATIAL PLANNING AND LAND USE MANAGEMENT: PROGRAMME MANDATE (Continued...)



Policy & Legislative Mandate

INTERNAL SUPPORT
Agriculture, Land Reform and Rural Development



- SPLUM Branch provides spatial planning and land use management services nationally, to give effect to the Spatial Planning and Land Use Management Act (SPLUMA) and the Spatial Data Infrastructure Act (SDI).
- Support is provided to other spheres of government, including municipalities and provincial government to effectively discharge their spatial planning and land use management responsibilities.
- The Branch supports Departmental projects and programmes as part of the mandate on Agriculture, Land Reform and Rural Development
- Branch provides environmental planning services to Departmental projects and programmes in alignment with the National Environmental Management Act (NEMA) and relevant policies



SPATIAL PLANNING AND LAND USE MANAGEMENT: PROGRAMME MANDATE (continued...)

Mandate

- Oversee and execute national spatial planning and land use management in compliance with the Spatial Planning and Land Use Management Act (SPLUMA).
- Administer and govern the South African Spatial Data Infrastructure (SDI) in accordance with the SDI Act.
- Provide technical and financial support to the South African Council for Planners (SACPLAN), in line with the Planning Profession Act.
- DALRRD is obliged in terms of the National Environmental Management Act, No 107 of 1998 (NEMA), and other environmentally related legislation to comply and integrate environmental planning on all its development projects that affects the environment.

Purpose

- Ensure the effective implementation of SPLUMA by coordinating with local and provincial governments to strengthen their spatial planning and land use management capabilities.
- Facilitate the complete implementation of the SDI Act by providing administrative and secretariat services to the Committee for Spatial Information and provide geospatial information management support to all organs of state.
- Elevate the quality of the planning profession by offering sustained support to SACPLAN.
- Deliver planning expertise and initiatives to the Department of Agriculture, Land Reform and Rural Development (DALRRD), ensuring compliance with relevant legislation, including the National Environmental Management Act (NEMA).



land reform &
rural development

Department:
Land Reform and Rural Development
REPUBLIC OF SOUTH AFRICA



SPATIAL PLANNING AND LAND USE MANAGEMENT: PROGRAMME MANDATE (continued...)

SPLUM Support to the Municipality (as per formal written request)

- Support the Municipality on various SPLUMA compliance and implementation aspects

Establishment of the Municipal Planning Tribunal (MPT)

Establishment of the Appeal Authority (AA)

Training and Capacity-building for officials and members of the MPT or Appeal Authority

Municipal SPLUM Bylaw Development and Review

Gazetting of Planning Bylaw

Development and/ or Review of the Land Use Scheme (LUS)

Development and/ or Review of the Spatial Development Framework (SDF)

Support on Capital Expenditure Framework (CEF)

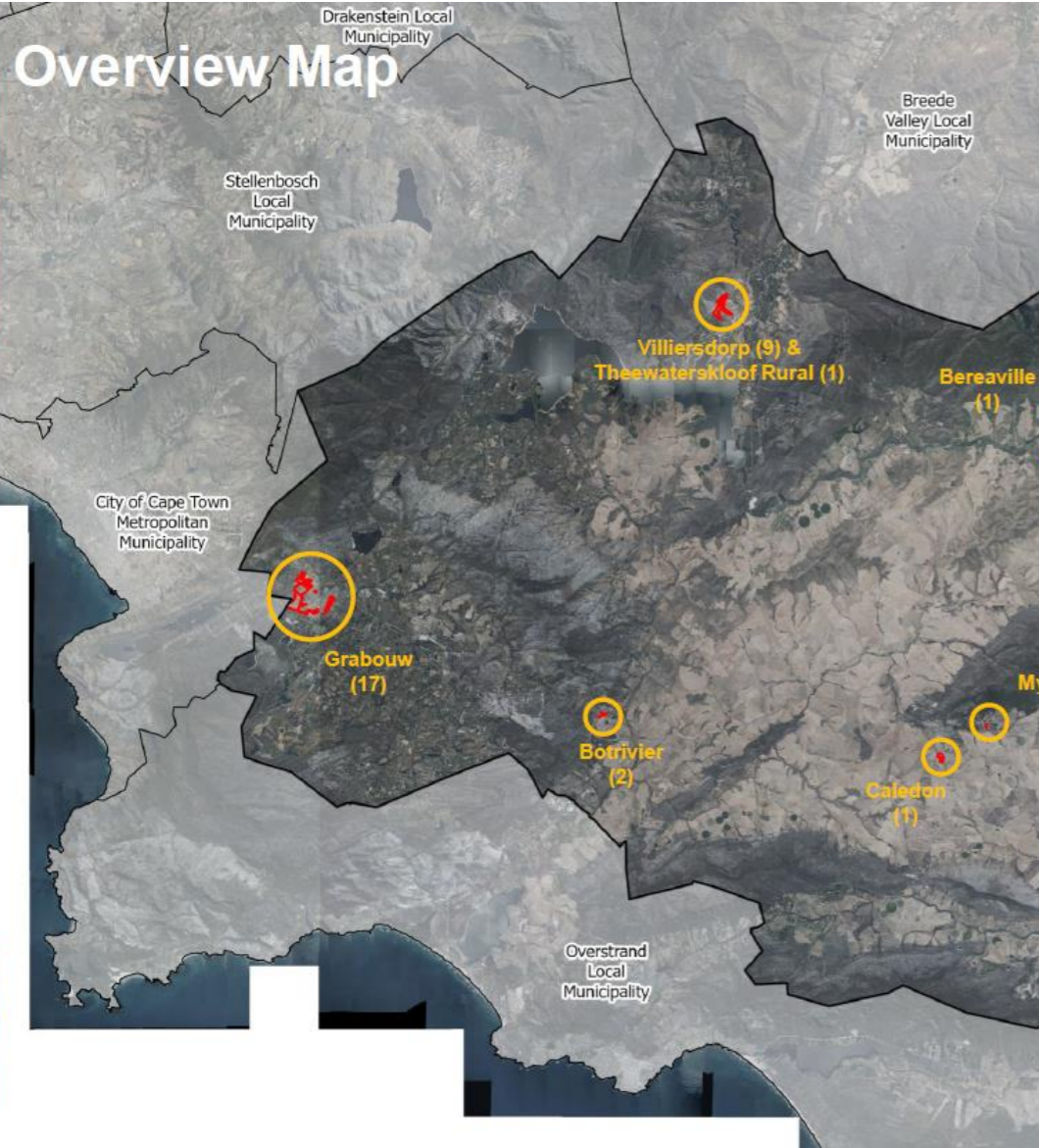


land reform &
rural development

Department:
Land Reform and Rural Development
REPUBLIC OF SOUTH AFRICA



SPLUM (Continued): Typical Drone Operations Support

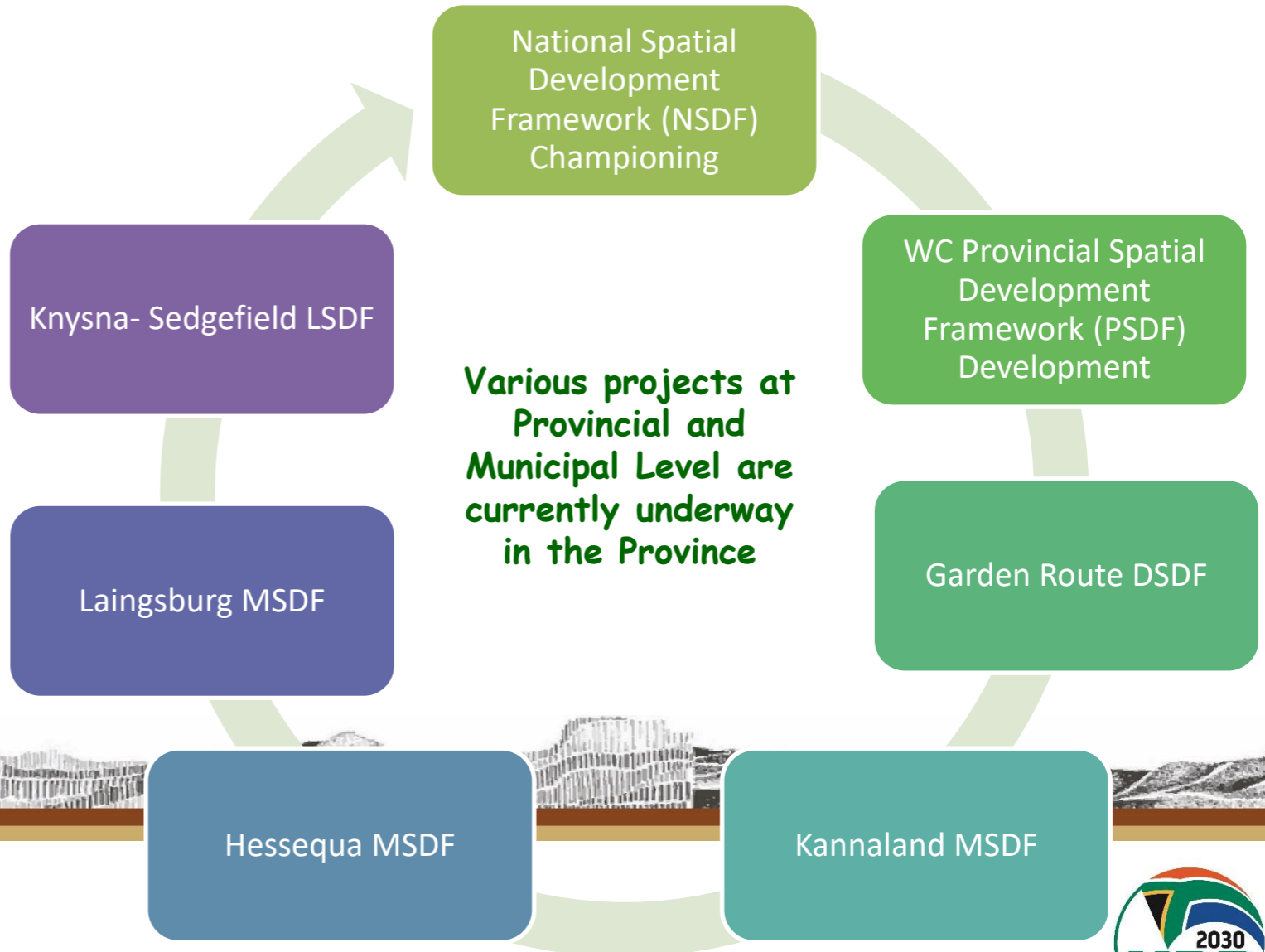


Villiersdorp and Theewaterskloof Rural Town (10)



SPLUM (Continued): CURRENT PROJECTS IN WESTERN CAPE

- It is advisable for the Municipality's Planning Department to make contact with the DLRRD's SPLUM Provincial Office to discuss specific needs of the Municipality.
- Formal Request Letters will then be required.
- Requests are processed through the Spatial Planning Adjudication Committee.
- Budgets for the Projects will then need to be sourced/ allocated.
- Terms of Reference must be developed (between the Municipality and the Department).
- SCM Processes to follow where Service Providers are required.
- It is important for the Municipality to provide regular updates on its SPLUM Compliance in order to confirm the support needed.



land reform &
rural development

Department:
Land Reform and Rural Development
REPUBLIC OF SOUTH AFRICA



RURAL DEVELOPMENT: PROGRAMME MANDATE

Strategic Objectives: Outcome 6: Integrated and inclusive rural economy.

Branch Purpose: Lead and facilitate implementation of the Rural Development Constitutional mandate (schedule 4 mandate) aligned to the National Development Plan 2030 Chapter 6; Integrated Rural Development Sector Strategy, the comprehensive rural development programme (CRDP) leading to sustainable and vibrant rural communities.

SUB- PROGRAMMES

RURAL INFRASTRUCTURE
DEVELOPMENT (RID)

NARYSEC

TECHNOLOGY RESEARCH AND
DEVELOPMENT

RURAL DEVELOPMENT
COORDINATION

CATALYTIC ROLE AND COORDINATION OF RURAL DEVELOPMENT TO SUPPORT IRDSS OBJECTIVES
AND SIX PILLARS

✓ Proposed focus for projects to be implemented in the identified high poverty and highly vulnerable wards as identified by the social vulnerability index. (red pockets within the provinces and lobby other stakeholders).

✓ Rural development interventions that are multi sectoral and driving rural economy and socio-economic development.

✓ Continue with DDM participation.



land reform &
rural development

Department:
Land Reform and Rural Development
REPUBLIC OF SOUTH AFRICA



NATIONAL RURAL YOUTH SERVICE CORPS (NARYSEC): PROGRAMME MANDATE

- The NARYSEC programme was established in September 2010.
- To equip unemployed rural youth with appropriate skills in order to enable them to gain access to economic opportunities.
- Such envisioned opportunities entailed various exit avenues from the programme to employment and enterprise development.
- Rural Economic Transformation through business development and support is an important NARYSEC exit strategy.
- In addition, NARYSEC seeks to inculcate a culture of responsible conduct, self-discipline, high moral values, personal confidence and national pride among young people residing in rural areas.
- The programme runs for a minimum of 4 months to a maximum of 36 months.

Vision: The long-term vision is to capacitate unemployed rural youth in various skills and to facilitate their transition to meaningful contributions towards vibrant, equitable and sustainable rural economies.

Mission: Empower unemployed rural youth with skills, leadership capabilities, patriotism and economic opportunities in their districts.

The Programme is implemented through four phases:



land reform &
rural development

Department:
Land Reform and Rural Development
REPUBLIC OF SOUTH AFRICA



NATIONAL RURAL YOUTH SERVICE CORPS (NARYSEC): PROGRAMME MANDATE (continued)

NARYSEC Strategic Outcomes

- Recruiting unemployed rural youth as part of the District Development Model and other approved government programmes and or employment opportunities;
- **Selection Criteria**
- The target is unemployed rural youth between the ages 18 - 35.
- Minimum qualification required is a grade 9.
- Youth must reside in rural area or targeted urban priority areas.
- Youth must be unemployed or part of an active business.
- At least 50% of the Youth recruited must be females
- The programme will also target youth with Disabilities.
- Former NARYSEC participants who are still unemployed
- may also be targeted for particular employment or
- entrepreneurial opportunities in a district.

1. Skilled rural youth ready to take up economic opportunities.



3. Youth-led enterprises contributing to the economy of the country.



2. Economically active youth in rural areas.



land reform &
rural development

Department:
Land Reform and Rural Development
REPUBLIC OF SOUTH AFRICA



RURAL INFRASTRUCTURE DEVELOPMENT: PROGRAMME MANDATE

- **Programme objectives:** Rural Infrastructure Development is a strategic catalyst program established to support rural communities to access socio-economic development services through provision of rural infrastructure. Working closely with provincial, municipalities, traditional councils and relevant stakeholders to facilitate provision of rural infrastructure relating to social and economic infrastructure programme and facilitate and implement the construction and grading of farm and village access roads. (socio-economic infrastructure in rural towns/villages: provision of basic services (bulk infrastructure); community multi-purpose centres, early childhood facilities, etc. Facilitate and implement the construction and grading of farm and village access roads).
- **The programme outcomes:** to facilitate the provision of quality infrastructure development to support rural economic transformation and create job opportunities and skills transfer during project implementation (construction); through the delivery of **catalytic projects: a catalytic project** is defined as a project of significant scale (i.e. its reach) and scope (i.e. impact on employment, services, economic and social investment, (and/or rates), thereby displaying some or all of the following characteristics:
 - It makes substantial impact;
 - It provides leverage and/or creates multiplier effects;
 - It has the power to radically activate development (social, economic or both);
 - It significantly impacts spatial form;
 - It creates jobs and increases land value; and
 - It contributes to the achievement of the vision and goals of the department in terms of rural development.



land reform &
rural development

Department:
Land Reform and Rural Development
REPUBLIC OF SOUTH AFRICA



RURAL INFRASTRUCTURE DEVELOPMENT: PROGRAMME MANDATE (continued)

Targeting and Planning:

- Infrastructure projects must be targeted in a coordinated manner in line with the District Delivery (Development) Model (DDM) and the Rural Development Sector Plans (RDSP).
- **Asset transfer and Management Plan (operational, maintenance and asset management) prior to development of infrastructure.**

Target areas:

- Communal areas on and off farm; municipal land, including commonages and public open spaces;
- Community; declared CRDP sites; prioritized District Municipalities; Rural Towns and Villages; Areas identified by the approved Rural Development Plans; and
- State land under DALRRD, National Department of Public Works and State-Owned Entities;
- Any other programme of the Department and Government that requires infrastructure development in a rural areas, budget permitting.
- Rural infrastructure development interventions are implemented in line with the **Integrated Rural Development Sector Strategy (IRDSS) and Strategic Integrated Projects (SIP 11).**



land reform &
rural development

Department:
Land Reform and Rural Development
REPUBLIC OF SOUTH AFRICA



TENURE REFORM IMPLEMENTATION: PROGRAMME MANDATE

Tenure Reform Implementation Mandate and Objectives:

- 1) **Extension of Security of Tenure Act 62 of 1997:** Its mandate has two elements: The protective element (Protecting the rights of occupiers/farm dwellers from arbitrary evictions by land owners or persons in charge of the farm by providing mediation and make referrals to LASA where litigation is required) and the Redistributive element: Section 4(1) of this Act makes provision for the Minister to makes grants available for planning, acquisition and development subsidies to assist occupiers/farm dwellers to have accesses to decent housing.
- 2) **Communal Property Association Act 28 of 1996:** The Act makes proviso for the a legal entity to be established to assist in holding and the management of property by communities who has receive land from the state. The department has the responsibility to establish and monitor the operations of the CPA and assist in the provision of training on how the CPA should be run and make sure that the CPA remains the property of the members.
- 3) **Land Tittle Adjustment Act 111 of 1993:** The Act makes provision to address situations where individuals or communities have claims to k=land but don't have registered title deeds due to historical or any other circumstances that denied them the right to have re-registered title deeds.



land reform &
rural development

Department:
Land Reform and Rural Development
REPUBLIC OF SOUTH AFRICA



TENURE REFORM IMPLEMENTATION: PROGRAMME MANDATE (continued)

The Act allows for the Minister to appoint Land Title Adjustment Commissioners to investigate and make decision regarding the claim and transfer the land to the claimants.

4) Transformation of Certain Rural Areas Act 94 of 1998: The act makes provision for the transfer of certain land to Municipalities and other legal entities as elected by claimants and the removal of certain restrictions on the alienation of land; matters regarding to minerals, the repeal of Rural areas Act of 1987 and related laws. The land concerns the former coloured areas designated by the former apartheid government.



land reform &
rural development

Department:
Land Reform and Rural Development
REPUBLIC OF SOUTH AFRICA



INTERVENTIONS

- **TRI**
 - ELANDSKLOOF CPA
- **SPLUM**
 - SUPPORT TO MUNICIPALITIES TO ENSURE SPLUM COMPLIANCE.
- **NARYSEC**
 - RECRUITMENT OF UNEMPLOYED YOUTH & EXIT OPPORTUNITES : 2025/2026 FY AND OUTER YEARS
- **LAND REFORM**
 - LEASE MANAGEMENT : 2 PROPERTIES (BERGVALLEI AND DOORNBOOSCH FARMS).
- **RID**
 - ELANDBAY SLIPWAY



land reform &
rural development

Department:
Land Reform and Rural Development
REPUBLIC OF SOUTH AFRICA



CONCLUSION

- **The desired outcome of the engagement with full Council of Cederberg are as follows:**
 - Council to note the department's wish for the administration to embrace and cooperate with the development plans for the local municipal space from DLRRD;
 - Full support towards DLRRD programmes within the municipal jurisdiction of Cederberg;
 - To establish a common vehicle to closely cooperate in the identification, coordination and implementation of projects by utilizing tools in line with IGR framework;
 - Possible formal instruments to include Service Level Agreements (MOU/ and MOA), Council Resolution;
 - To obtain from Cederberg Municipality the future plans in order for the department to consider support to the rural communities.



CONTACT DETAILS

❑ CHIEF DIRECTOR:

Ms P DINGILE: 021 409 0331 Phindiwe.Dingile@dlrrd.gov.za

❑ DIRECTOR: WEST COAST DISTRICT & CAPE METRO:

Mr A Booysen: 021 409 0300 Andrey.Booyesen@dlrrd.gov.za

❑ DIRECTOR: SPLUM:

Mr A. HAY: 021 409 0300 Ashley.Hay@dlrrd.gov.za

❑ DIRECTOR: NARYSEC:

Mr N. MGOQI: 021 409 0360/0344
Nyameko.Mgoqi@dalrrd.gov.za

❑ DIRECTOR: RID:

Ms N. NTSHONA: 021 409 0334/5
Ncumisa.Ntshona@dalrrd.gov.za

❑ DIRECTOR: TRI:

Ms T. XASO: 021 409 0354
Thokozile.Xaso@dalrrd.gov.za



land reform &
rural development

Department:
Land Reform and Rural Development
REPUBLIC OF SOUTH AFRICA



THANK YOU!
ENKOSI!
BAIE DANKIE!



land reform &
rural development

Department:
Land Reform and Rural Development
REPUBLIC OF SOUTH AFRICA

