

ELANDSBAY AREA PLAN

2017-2022



MESSAGE FROM WARD COUNCILLOR

South Africa as nation has held successful and peaceful Local Government elections on 03 August 2016. These Local Government elections were certified to have been free and fair to larger extent. This is clear demonstration of the growth of our young democracy. In accordance with the provisions of the laws that govern the affairs of the Municipality we have embarked upon a process of consultation with the local community with a view to present the IDP and budget for the period 2017-2022.



Chapter 4 of the Municipal Systems Act 32 of 2000 makes community participation in the affairs, programmes and activities of the Municipality a legal obligation. The IDP is therefore the culmination of a lengthy process of consultation with the local community. Accordingly, this IDP carries the aspirations of the masses of our community which the 2017/18 Budget must seek to finance. Therefore, this IDP must be seen as a beacon of hope that will continue to guide us over the next financial year in our collective endeavours of building a better life for all our communities. Critical to this is the question of compliance with the laws of the Republic.

For an example, before the end of May 2017 we must have presented to Council the final budget for the forthcoming financial year. In this regard, section 24 of the Municipal Finance Management Act 56 of 2003 prescribes that "the final budget must be tabled 30 days before the start of the new financial year. "We remain committed to the realization of the 5 National Key Performance Areas of municipalities, being the following:

- ▽ Good Governance and Public Participation
- ▽ Municipal Transformation and Organisational Development
- ▽ Basic Infrastructure and Service Delivery
- ▽ Local Economic Development
- ▽ Municipal Financial Viability and Management

This IDP together with its projects and implementation focus relates strongly to the capital budget. Our IDP and Budget will go a long way in improving the quality of life of our Community by broadening accessibility and alleviating poverty.

Ward Councillor - William Joseph Farmer

Ward 5 - Elandsbay

Table of Contents

1. INTRODUCTION AND PURPOSE OF THE AREA PLAN	5
1.1 General.....	5
1.2. Structure of the Document	5
2. ELANDSBAY HISTORICAL BACKGROUND.....	6
3. DEVELOPMENT PERSPECTIVE.....	6
4. WARD COMMITTEE INFORMATION	8
Table 1: Ward Committee Information.....	8
5. CENSUS SURVEY 2011	8
5.1. Population of Elandsbay.....	8
Table 2: Population.....	8
5.2. Population size for towns and rural areas.....	8
Table 3: Population size	8
5.3. Percentage gender distribution per town.....	9
Table 4: Percentage gender distribution per town	9
5.4. Age distribution per category.....	9
Table 5: Age distribution per category	9
Figure 1: Total Age Distribution.....	9
5.5. Average household size per ward.....	9
Table 6: Average Household size per ward.....	9
5.6. Dwelling types per town	10
Table 7: Dwelling types per town.....	10
5.7.Official Employment Status.....	10
Table 8: Official Employment Status.....	10
5.8. Percentage monthly income per household	10
Table 9: Percentage monthly income per household.....	10
Figure 2: Annual Income per Household.....	10
5.9. Human Settlement Overview (Housing)	11
Table 10: Human Settlement Overview.....	11
5.10 Households' source of energy	11
Table 11: Households' source of energy.....	11
5.11. Households' source of refuse removal	11
Table 12: Households' source of refuse removal	11
5.12. Households' source of water.....	11

Table 13: Household's source of water	11
5.13. Educational Institutions per person.....	11
Table 14: Educational Institutions per person	11
6. SERVICES: CAPACITY AND BACKLOGS.....	12
Table 15: Service Capacity and Backlogs.....	15
Table 16: Action Plan	16
7. COMMUNITY PRIORITIES AND ACTION PLANS.....	16
7.1 Elandsbay	16
Table 17: Top Priorities of Elandsbay.....	18
7.2. Other Needs Of Elandsbay.....	19
Table 18: Other Needs of Elandsbay.....	19
7.3. Elandsbay Needs For Sector Departments.....	20
Table 19: Elandsbay Needs for Sector Departments	20

1. INTRODUCTION AND PURPOSE OF THE AREA PLAN

1.1 General

Area-based planning is an initiative that complements the IDP process by focussing and zooming in on communities. It sets out a strategy for proper planning and sustainable development of an area within the local governing body and for a specified timeframe. Communities in the sense are represented by settlements and wards. Wards are often demarcated in a way that divides areas that in reality represent coherent communities or settlements. Cederberg Municipality decided to adopt an approach that focusses on sensible geographical areas, simultaneously considering wards to facilitate that ward planning is not neglected. To achieve this a number of wards are combined for each area plan to echo the area-based approach in a practical manner.

The focus of this Area plan has been identified as Elandsbay (Ward 5). With regards to this, the approach represents the effort to address integrated planning at a sub-municipal level. The importance of the role of the ward and ward committees is addressed in the second section of each Area Plan. It also contains the community inputs and the results of the public meetings pertaining to those wards.

1.2. Structure of the Document

As mentioned in the previous paragraph, when representing planning and community participation at local level, one has to present information per town and per ward.

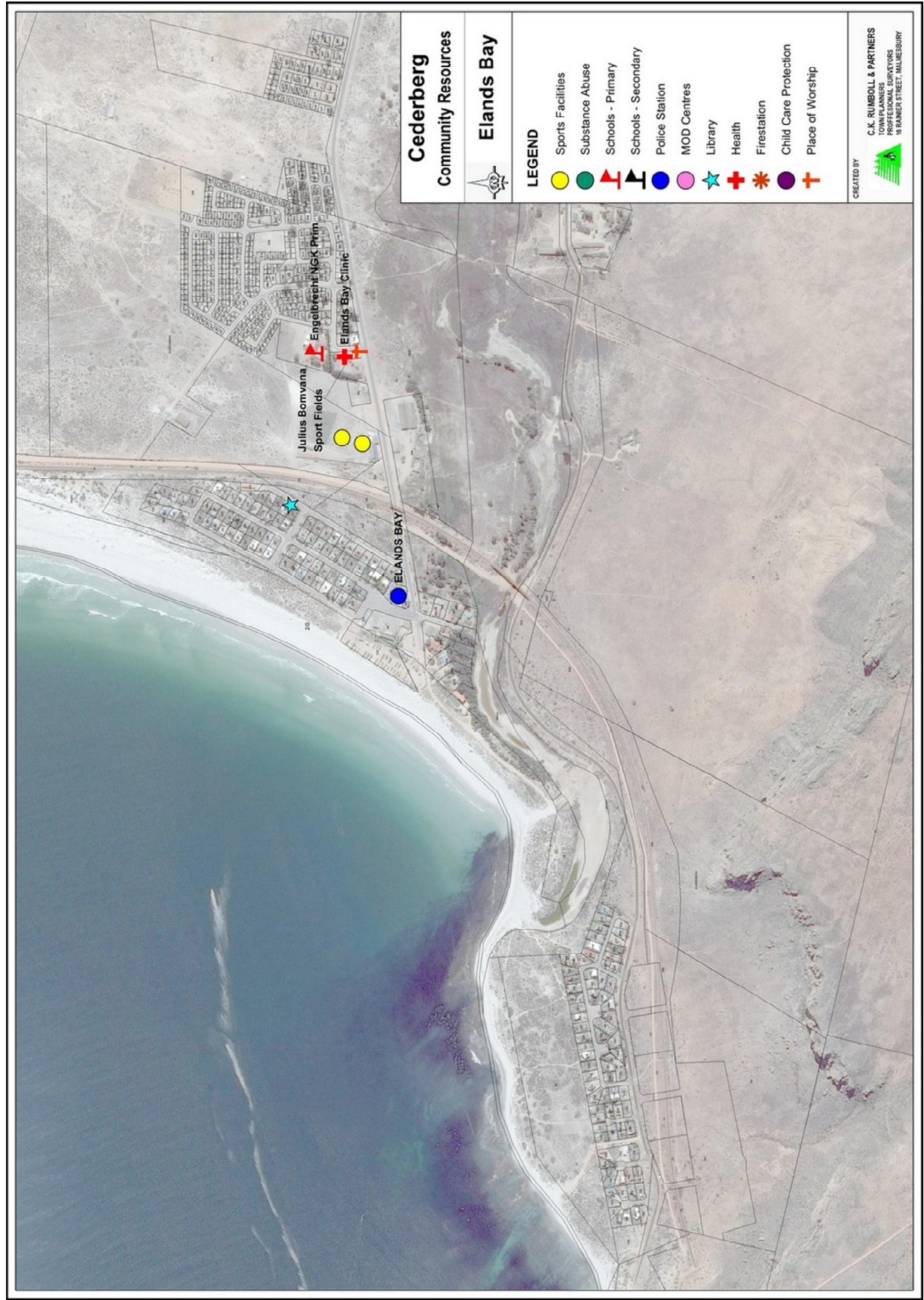
This can be challenging as it interrupts the natural flow from analysis and community participation towards projects. To maintain clarity, however, everything that can be linked to a town was grouped in the town section, and everything linked to a ward approach, is presented in the ward section.

2. ELANDBAY HISTORICAL BACKGROUND

Elandsbay can be defined as a somewhat isolated settlement, which can partly be ascribed to the fact that the access routes to the towns are mainly gravel roads. As of late the town has become a major surfing location, noted also for its caves and rock paintings. Renowned archaeologist, John Parkinson, excavated the Elandsbay Area in the 1970's providing in depth information of the cave's inhabitants. The Heritage Western Cape declared Elandsbay cave and most of Baboon Point (Cape Deseada) on which it is located a provincial heritage site. Baboon Point has an unique value and indicates history of the Khoisan tribe. The area also hosts important bird habitats. Activities in the town entail watching dolphins and whales from the shore. The prominence of this point on the West Coast of South Africa, and the strong link to early evidence of the Khoi and San interaction makes this area of national and international importance.

3. DEVELOPMENT PERSPECTIVE

Elandsbay functions as a low order service centre and holiday town that supply mainly basic goods and services to its local inhabitants. The fishing industry forms the main economic base, but is showing a declining trend as a consequence of the quota limitations on fishing for the local community. The Heritage site in Elandsbay is to be used in a sustainable manner which can benefit Elandsbay and the Cederberg community, a conservation plan is currently being developed. Heritage Western Cape, the provincial heritage resources authority and governing body responsible for the site, is overseeing the process and has appointed Eco Africa Environmental Consultants. Agriculture, especially potato farming, makes a steady contribution to the economy. Although isolated, Elandsbay has a thriving community and provides a wide range of goods and services to its residents, as well as the surrounding communities.



4. WARD COMMITTEE INFORMATION

MEMBER	SECTOR	CONTACT NR	EMAIL
William Joseph Farmer	Ward Councillor	0843415558	williamf@cederbergraad.co.za
Alberto van der Heever	Ward Assistant	0780717744	albertov@cederbergraad.co.za
Gert Mosterd	Geographical	0836601370	N/A
Jeffery Schalk	Geographical	07914685577	N/A
Gertrude Angle	Geographical	0740471777	N/A
Winston Abrahams	Sport & Culture	0274322326	N/A
Arend de Waal	Chamber of Commerce/Tourism	0832304047	arend@gmail.com
Sarha Foentjies	Education	0736206182	sjdfoentjies@gmail.com
Gerrit Alfred	Geographical	0731240972	N/W
Willem Auret	Health	0832759791	Willem.auret50@gmail.com
Henry Arangie	Crime	0763725717	N/A

Table 1: Ward Committee Information

5. CENSUS SURVEY 2011

5.1. Population of Elandsbay

Town	Total
Elandsbay	1525

Table 2: Population

5.2. Population size for towns and rural areas

Population Group	Number	Percentage
Black African	467	30.62%
Coloured	917	60.13%
Indian or Asian	21	1.37%
White	115	7.54%
Other	5	0.32%
Total	1525	

Table 3: Population size



5.3. Percentage gender distribution per town

Town	Female	Male
Elandsbay	48.9%	51.1%

Table 4: Percentage gender distribution per town



5.4. Age distribution per category

Town	0-9 years	10 – 19 years	20-29 years	30-39 years	40-49 years	50-59 years	60-69 years	70-79 years	80+ years
Elandsbay	268	257	250	223	209	147	100	59	13

Table 5: Age distribution per category

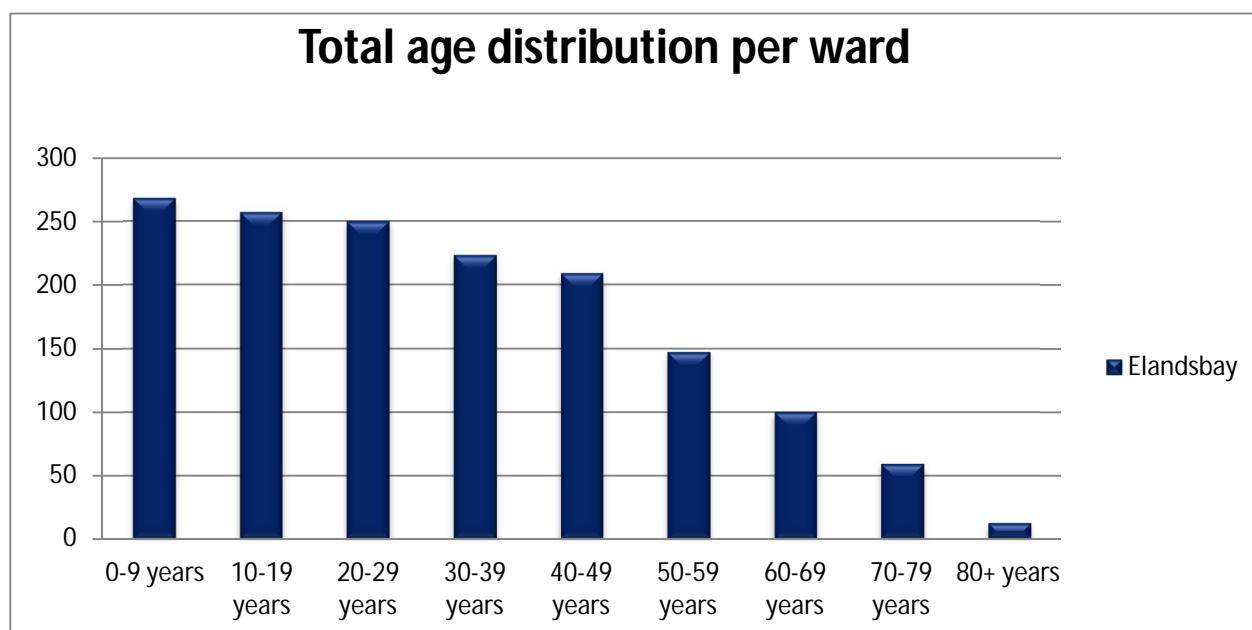


Figure 1: Total Age Distribution



5.5. Average household size per ward

Town	Number of households	Households consisting of 2 people	Households consisting of 4 people
Elandsbay	2679	46.4%	32.4%

Table 6: Average Household size per ward

5.6. Dwelling types per town

Town	Brick House	Traditional dwelling/ structure	Flat/ apartment	Cluster house in complex	Semi-detached house	House/ room in backyard	Flatlet on large property	Informal shack on property	Informal shack in squatter	Caravan/ Tent	Other
Elandsbay	420	4	0	2	6	2	1	4	0	0	9

Table 7: Dwelling types per town

5.7. Official Employment Status

Town	Employed	Unemployed	Discouraged work-seeker	Other not economically active	Age less than 15 years	N/A
Elandsbay	289	128	103	489	0	516

Table 8: Official Employment Status

5.8. Percentage monthly income per household

Town	No Income	R1 – R9 600	R 9 601 – R 38 200	R38 201 – R 153 800	R153 801 – R614 400	R 614 401 – R 2 457 600	R 2 457 601+
Elandsbay	95	52	192	75	22	5	1

Table 9: Percentage monthly income per household

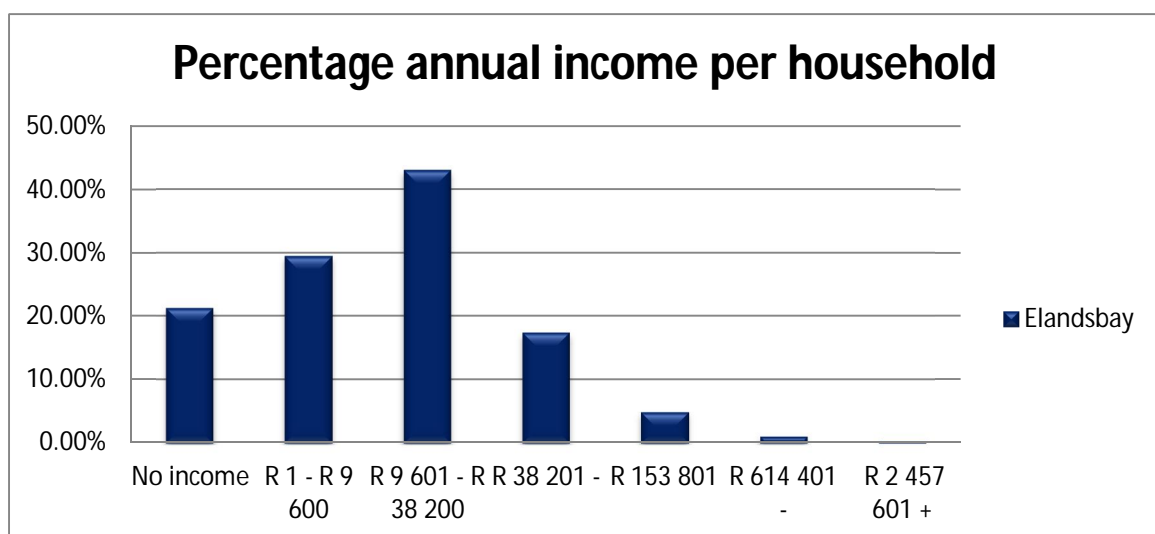


Figure 2: Annual Income per Household



5.9. Human Settlement Overview (Housing)

Town	Waiting list	Number of Units	Financial year
Elandsbay	309	-	2018/19 – 2020/21

Table 10: Human Settlement Overview

5.10 Households' source of energy

Town	Electricity	Gas	Paraffin	Candles	Solar	None	Unspecified	N/A
Elandsbay	431	0	3	10	0	2	0	0



Table 11: Households' source of energy

5.11. Households' source of refuse removal

Town	Removed by Municipality once per week	Removed by private company less often	Communal refuse dump	Own refuse dump	No rubbish disposal	Other
Elandsbay	416	2	1	12	14	1

Table 12: Households' source of refuse removal



5.12. Households' source of water

Town	Regional / Local water scheme operated by	Borehole	Spring	Rain Water Tank	Dam/ Pool/ Stagnant Water	River / Stream	Water vendor	Water Tank	Other	N/A
Elandsbay	439	2	0	0	0	0	1	0		

Table 13: Household's source of water

5.13. Educational Institutions per person



Town	Pre-School	Ordinary School	Special School	Further Education and Training College FET	Other College	Higher Educational Institution University/ University of Technology	Adult Basic Education and Training Centre / ABET Centre	Literacy classes	Home based education/ Home Schooling	N/A
Elandsbay	0.52%	22.62%	0.26%	0.85%	0.19%	0.78%	2.03%	0.26%	0.26%	72.39 %

Table 14: Educational Institutions per person

6. SERVICES: CAPACITY AND BACKLOGS

Municipal Service in Elandsbay				
Water	1 226 HH	45.7%	<ul style="list-style-type: none"> 45.7% of HHs receive their water from the municipality HHs with access to water represents 9% of all HH. 1 226 HHs receive their water from the municipality. 1 027 HHs source their water from a borehole 106 HHs from a dam/pool/stagnant water 70 HHs from a water tanker 126 HH from a spring 	High water losses
Sanitation	2 027 HH	75.6%	<ul style="list-style-type: none"> HHs with sanitation services in the ward represents 15% of all HHs. 75.6% of HHs have access to sanitation services above the minimum service level. 234 HHs have no access to sanitation services. 25 HHs use bucket toilets 	Backlog: ± 626 HHs <ul style="list-style-type: none"> 234 HHs with no provision of toilets 25 HHs utilising bucket toilets 367 HHs other toilet provisions
Electricity for lighting	2 477 HHs	92.4%	<ul style="list-style-type: none"> HHs with electricity in the ward represents 18.3% of all HHs. 5 HHs use paraffin for lighting purposes 	Backlog: ± 191 HHs <ul style="list-style-type: none"> 22 HHs with no electricity 169 HHs using paraffin & candles

			<ul style="list-style-type: none"> • 164 HHs use candles for lighting purposes • 6 HHs utilizes solar energy 	
Refuse Removal	1 348 HHs	50.3%	<ul style="list-style-type: none"> • 50.3% of HHs receive refuse removal services above the minimum service level. • HHs with refuse removal services represents 9.9% of all HHs. • 1 036 HHs use their own refuse dump. • 58 HHs have no access to refuse removal services 	Backlog: ±1 094 HHs <ul style="list-style-type: none"> • 58 HHs with no provision of service • 1 036 HHs utilising own refuse dump.
Roads & Storm Water	90 kilometres 15 kilometres	86% 14%	<ul style="list-style-type: none"> • Paved roads • Unpaved roads 	<ul style="list-style-type: none"> • Rehabilitation and resurfacing – backlog funding constrains • Tarring of gravel roads – funding constrains.
Housing	2 381 formal housing structures		<ul style="list-style-type: none"> • 88.8% of the housing structures is formal housing structure • 1.9% of structures are informal structures • 1.5% is in an informal settlement • 1.4% is shacks in the backyard • The 1.9% informal structures represent 3.5% of all informal structures within the municipal area. 	Backlog: ± 52 HHs <ul style="list-style-type: none"> • The backlog include backyard dwellers and structures in informal settlements
Community Facilities				
Libraries	2		Graafwater Library (Van der Stel Straat)	

			Elands Bay Library (Skoolstraat 10)	
Services by other spheres of government				
Multi-Purpose Centre	0		None	N/A
Hospitals / Clinics	2		Graafwater Clinic Elands Bay Clinic	
Social Services			<u>Child Welfare:</u> <ul style="list-style-type: none"> • Renders social work services in Elands Bay and farm areas. • Child Welfare office is located in Lamberts Bay at Eureka office block • Frequency of service: Monday to Friday <u>Department Social Development:</u> <ul style="list-style-type: none"> • Renders probation and child protection services to Graafwater and farm areas. • Department provide services from regional office in Vredendal • Frequency of service: Tuesday, Wednesday and Thursday 	•
Schools	9		Schools: <ul style="list-style-type: none"> • Maasrust SSKV Primary • Graafwater High School • Graafwater Primary • Kromland NGK Primary • Elandsfontein NGK Primary • Langvlei SSKV 	

			Primary <ul style="list-style-type: none"> • Breevlei Primary • Sandberg NGK Primary • Engelbrecht NGK Primary 	
Police Station	2		Graafwater SAPS – Stasieweg Elands Bay SAPS – Hunterstraat 2	

Table 15: Service Capacity and Backlogs

The following action plan addresses the backlogs in Elandsbay mentioned in the table above:

	Challenges/Backlog	National Target (Yes/No)	Rural Area (Yes/No)	Informal Settlement (Yes/No)	2017/18	2018/19	2019/20
Water	High water losses	Yes			50 000	50 000	50 000
Sanitation	Backlog: ± 626 HHs <ul style="list-style-type: none"> • 234 HHs with no provision of toilets • 25 HHs utilising bucket toilets • 367 HHs other Toilet provisions 	Yes		Yes	2 712 666	2 712 666	2 712 666
Electricity for lighting	Backlog: ± 191 HHs <ul style="list-style-type: none"> • 22 HHs with no electricity • 169 HHs using paraffin & candles 	Yes	Yes	Yes			2 769 500
Refuse	Backlog: ±1	Yes	No	Yes	59		

	Challenges/Backlog	National Target (Yes/No)	Rural Area (Yes/No)	Informal Settlement (Yes/No)	2017/18	2018/19	2019/20
Removal	094 HHs <ul style="list-style-type: none"> 58 HHs with no provision of service 1 036 HHs utilising own refuse dump 						
Roads & Storm Water	<ul style="list-style-type: none"> Rehabilitation and resurfacing – backlog funding constrains Tarring of gravel roads funding constrains. 	Yes	Yes	No	2 km	5 km 2 km	5 km 3 km

Table 16: Action Plan

7. COMMUNITY PRIORITIES AND ACTION PLANS

7.1 Elandsbay

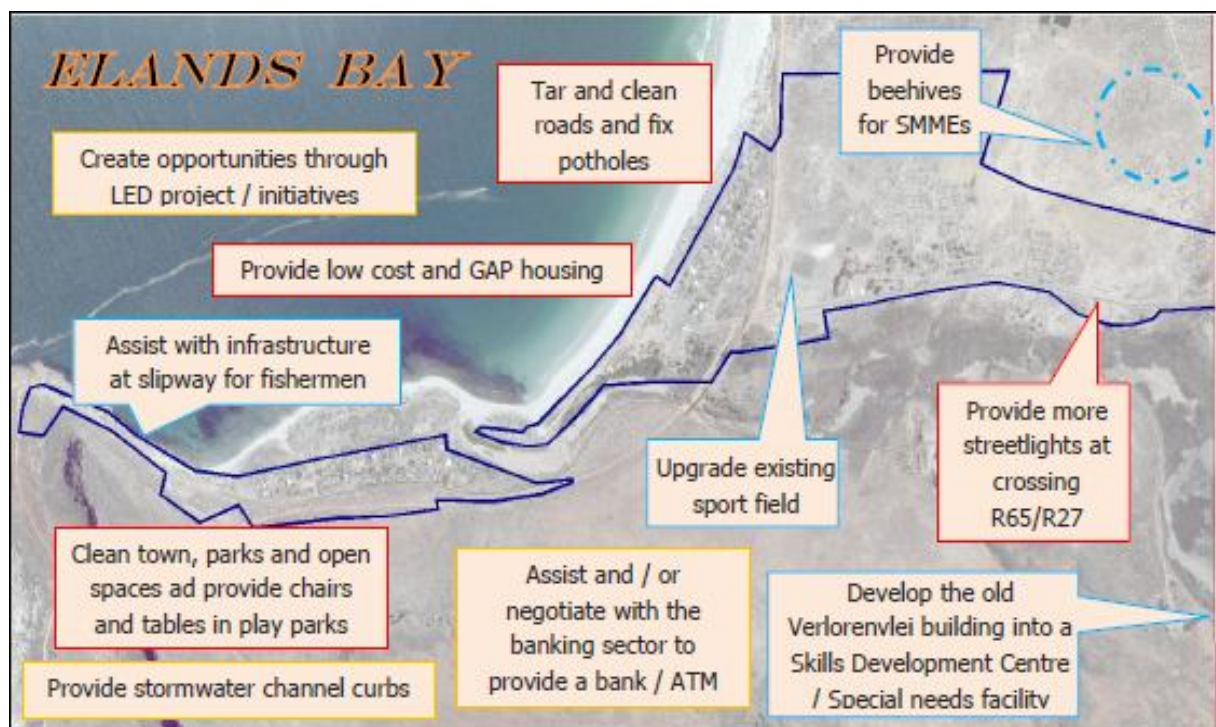
The Municipality embarked on a Door to door survey to establish the needs of the communities. The Ward Councillor of Ward 4 together with the ward committee members have prioritised the needs that the community have identified, the top 10 priorities of Elandsbay are as follow, however the other needs will also be list in this document as well as the needs that are the responsibility of Sector Departments:

ELANDSBAY IDP PRIORITIES (MUNICIPAL MANDATES) 2017			CAPEX/ OPEX	BUDGET					ADDITIONAL COMMENTS
RANK	PRIORITY	DESCRIPTION		2017/18	2018/19	2019/20	2020/21	2021/22	
	Housing	Provide low cost and GAP housing	Capex						Apply for funding at the Department of Human Settlements
2	Beautifaction of town	Clean town, parks and open spaces and provide chairs and tables in playparks	Capex	-	R 100 000	-	-	-	Internal Funding
3	Roads	Tar more roads	Capex	R 300 000	-	-	-	-	Internal Funding
		Fix Potholes	Opex	R 180 000	-	-	-	-	Internal Funding
		Clean Roads	Opex	R 50 000	-	-	-	-	Internal Funding
4	Streetlights	Provide more streetlights at crossing R65/R27	Opex	R 10 000	-	-	-	-	Internal Funding
5	Unemployment	Create opportunities through LED project/initiatives							Apply for funding at Provincial Government to assist with Aqua Culture Farming projects

ELANDSBAY IDP PRIORITIES (MUNICIPAL MANDATES) 2017			CAPEX/ OPEX	BUDGET					ADDITIONAL COMMENTS
RANK	PRIORITY	DESCRIPTION		2017/18	2018/19	2019/20	2020/21	2021/22	
6	Banking Services	Assist and/or negotiate with the banking sector to provide a bank and/or ATM		-	-	-	-	-	Negotiate with bankings services to provide a bank and/or atm services in Elandsbay. No funding applicable
7	Stormwater	Provide stormwater channel curbs	Capex	-	-	-	R 150 000	R 100 000	Internal Funding
8	Develop the Old Verlorenvlei Building	Develop the old verlorenvlei into a Skills Development Centre/Special needs facility							Apply for SETA funding and/or Provincial grant funding
9	LED	Assist with infrastructure at slipway for fishermen. Provide beehives for SMMEs							Source funding for Aqua Culture projects at Department of Fisheries
10	Sportground	Upgrade existing Sportfield							Source funding

Table 17: Top Priorities of Elandsbay

The Spatial Mapping of the abovementioned projects are as follows:



7.2. Other Needs Of Elandsbay

The other needs are listed in no particular order:

OTHER NEEDS OF ELANDBAY – 2017		
NUMBER	OTHER NEEDS	DESCRIPTION
A	Land for Emerging Farmers	Provide land for emergin farmers
B	Partnership between emerging and commercial farmers	Facilitate partnerships between emerging and commercial farmers
C	Water Treatment Works	Upgrade the water treatment works
D	Sidewalks	Dedicated sidewalk for the 19lderly and make sidewalks disabled friendly

Table 18: Other Needs of Elandsbay

7.3. Elandsbay Needs For Sector Departments

ELANDSBAY IDP PRIORITIES (OTHER GOVERNMENT DEPARTMENTS) 2017		
Number	GOVERNMENT DEPARTMENT RESPONSIBLE	PRIORITY
1	Department of Education	Develop a skills centre
		Assist with bus shelter for school children
		Assist with transport of school children to Graafwater High School
2	Department of Health	Assist with ambulance service
		Employ more staff
3	Department of Agriculture	None
4	Department of Community Safety	None
5	Department of Economic Development & Tourism	None
6	Department of Social Development	Assist with creches
7	Department of Sport, Arts & Culture	Provide a skateboard park
8	Department of Public Works & Transport	Assist with an additional low water bridge to harbour

Table 19: Elandsbay Needs for Sector Departments