



## Request For Information

# Construction Contractors and Supplier Information

*PR11-0173: BESS Package 3A – Graafwater and Paleisheuvel*

Document No.: PR11-0173\_CN-006\_RFI-001

Revision: 01

Date: 2020/08/11



## Revision and approvals page

**Author:** Estiaan vd Heever

**Date:** 2022/08/11

**Charge Number:** PR11-0173

### Revision History:

Rev	Date	Description	By	Approved
01	2022/08/11	Issued for quotation	Estiaan vd Heever	Boitshoko Nzotta

**Originator:**

**Approved:**

\_\_\_\_\_  
Estiaan vd Heever    Date

Project Manager

Proconics

\_\_\_\_\_  
Boitshoko Nzotta    Date

Procurement

Proconics



# Executive Summary

---

The purpose of this document is to detail the overall requirement for site camp facilities, services and construction related procurement that will be required through the lifecycle of the project.



# Table of Contents

---

<b>1</b>	<b>INTRODUCTION .....</b>	<b>7</b>
<b>2</b>	<b>RFI REQUIREMENT .....</b>	<b>8</b>
<b>3</b>	<b>SERVICES REQUIRED .....</b>	<b>8</b>
<b>4</b>	<b>MINIMUM CRITERIA .....</b>	<b>9</b>
<b>5</b>	<b>APPLICATIONS .....</b>	<b>10</b>
<b>6</b>	<b>SITE LOCATIONS.....</b>	<b>10</b>
6.1	GRAAFWATER .....	10
6.2	PALEISHEUWEL.....	11
<b>7</b>	<b>DETAILS OF SERVICES REQUIRED .....</b>	<b>12</b>
7.1	SITE OFFICES .....	12
7.1.1	<i>Parkhome Units .....</i>	<i>12</i>
7.1.2	<i>Steel Container Units .....</i>	<i>13</i>
7.2	BOARDROOMS .....	13
7.2.1	<i>Parkhome Units (Double Volume) .....</i>	<i>13</i>
7.2.2	<i>Steel Container Units .....</i>	<i>14</i>
7.3	ABLUTIONS.....	14
7.3.1	<i>Parkhome Units .....</i>	<i>14</i>
7.3.2	<i>Steel Container Units .....</i>	<i>15</i>
7.4	KITCHEN .....	15
7.4.1	<i>Parkhome Units .....</i>	<i>15</i>
7.4.2	<i>Steel Container Units .....</i>	<i>16</i>
7.5	OPTIONAL EXTRAS .....	16
7.6	DELIVERY AND COLLECTION .....	17
<b>8</b>	<b>FENCING OF SITE CAMPS .....</b>	<b>17</b>
8.1	TYPICAL SITE CAMP LAYOUT .....	17
8.2	FENCE REQUIREMENTS .....	18
<b>9</b>	<b>SECURITY .....</b>	<b>18</b>
9.1	SECURITY REQUIREMENTS AND RESPONSIBILITIES.....	18
<b>10</b>	<b>SAFETY EQUIPMENT (PPE) .....</b>	<b>19</b>
10.1	PPE REQUIREMENTS.....	19



<b>11</b>	<b>WASTE MANAGEMENT .....</b>	<b>20</b>
11.1	WASTE MANAGEMENT REQUIREMENT .....	20
<b>12</b>	<b>BUSH CLEARING .....</b>	<b>20</b>
12.1	BUSH CLEARING REQUIREMENTS .....	20
<b>13</b>	<b>PLUMBING .....</b>	<b>21</b>
13.1	WATER CONNECTION .....	21
13.2	SEWAGE CONNECTION .....	21
<b>14</b>	<b>ELECTRICAL INSTALLATION SERVICES .....</b>	<b>22</b>
14.1	SITE CAMP ELECTRIFICATION .....	22
<b>15</b>	<b>CLEANING SERVICE AND CONSUMABLES .....</b>	<b>22</b>
15.1	CONSUMABLES REQUIREMENT .....	23
<b>16</b>	<b>SANITARY SERVICES .....</b>	<b>23</b>
16.1	SEWAGE AND GREY WATER REMOVAL .....	23
<b>17</b>	<b>IT SERVICES .....</b>	<b>24</b>
17.1	IT SERVICES REQUIRED .....	24
<b>18</b>	<b>SIGNAGE .....</b>	<b>24</b>
18.1	SIGNAGE REQUIREMENTS .....	25
<b>19</b>	<b>WATER TRANSPORTATION .....</b>	<b>25</b>
19.1	WATER TRANSPORTATION REQUIREMENTS .....	25
<b>20</b>	<b>STATIONARY .....</b>	<b>26</b>
20.1	STATIONARY REQUIREMENTS .....	26
<b>21</b>	<b>FUEL SUPPLY AND TRANSPORTATION .....</b>	<b>26</b>
21.1	FUEL TRANSPORTATION AND SUPPLY REQUIREMENTS .....	26
<b>22</b>	<b>TRANSPORT OF PERSONNEL .....</b>	<b>27</b>
22.1	TRANSPORTATION OF PERSONNEL REQUIREMENTS .....	27
<b>23</b>	<b>CIVIL CONTRACTORS .....</b>	<b>27</b>
23.1	CIVIL CONTRACTOR SCOPE .....	27
23.2	CIVIL APPROACH .....	28
<b>24</b>	<b>ELECTRICAL AND MECHANICAL INSTALLATION CONTRACTORS .....</b>	<b>28</b>



24.1	ELECTRICAL CONTRACTOR SCOPE .....	28
24.2	MINIMUM CRITERIA.....	29
<b>25</b>	<b>RETICULATION CONTRACTORS .....</b>	<b>29</b>
25.1	ELECTRICAL CONTRACTOR SCOPE.....	29
25.2	MINIMUM CRITERIA.....	30
<b>26</b>	<b>CLOSE OUT.....</b>	<b>30</b>



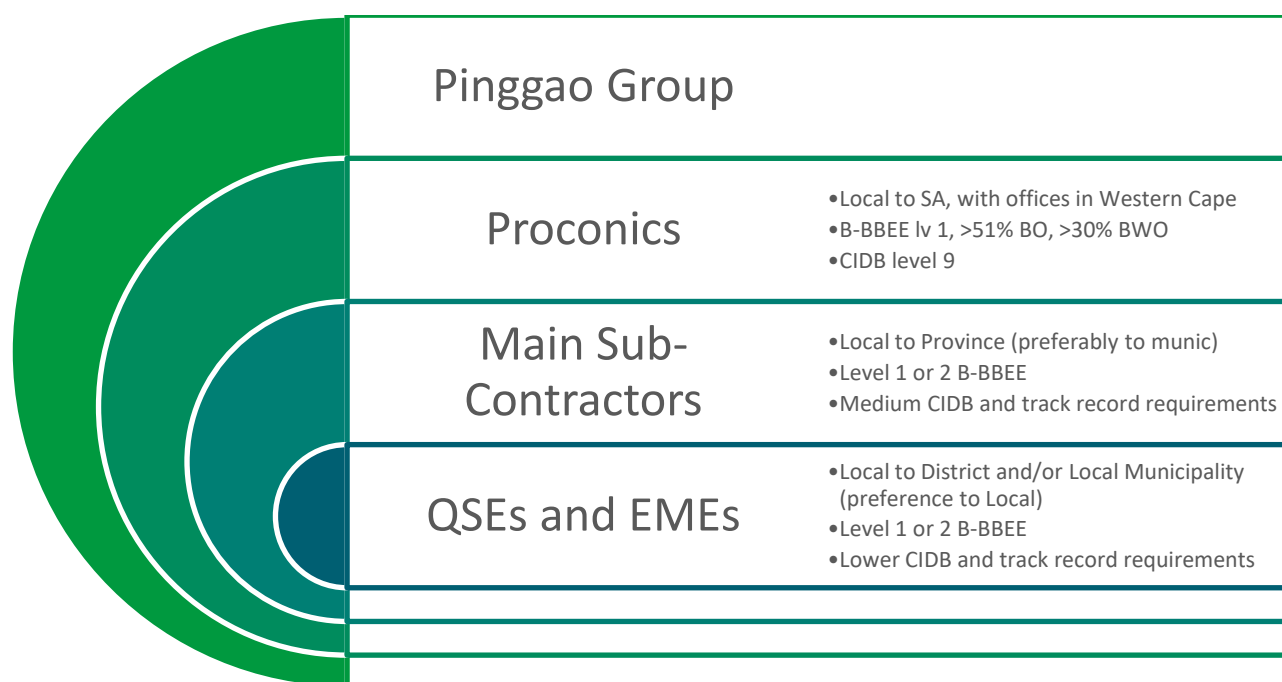
# 1 Introduction

As part of Eskom’s clean energy projects, Battery Energy Storage System (“BESS”) projects totalling approximately 1440 MWh are to be installed at various electricity substations across the country. As part of Package 3, Lot A, 5MW/30MWh of BESS will be integrated into the existing Graafwater 66/22 kV distribution substation and 6MW/24MWh at 11 kV and 3.5MW/21MWh at 22 kV of BESS will be integrated into the existing Paleisheuwel 132/66/11 kV distribution substation. Both sites are located within the Western Cape Operating Unit (“WCOU”).

Pinggao – A Chinese State-Owned Entity was appointed by Eskom to implement the project as the principal contractor. Pinggao will ultimately be responsible to ensure the successful implementation and completion of the project. As part of their commitment to the project and local development, 20% of their contract value needs to be spent local to South Africa.

Proconics as a 100% local, Level 1 BBBEE Company has been appointed by Pinggao as their subcontractor for the execution of all engineering and construction works related to the project.

Below illustrates the hierarchy as explained above:





## 2 RFI Requirement

Proconics invites bidders based on this Request for Information (RFI) to submit information for the supply, delivery, construction, or installation of services as detailed below.

This RFI is a stand-alone information-gathering and market-testing exercise, intended only to inform and assist Proconics's further deliberation and development of a strategy for the local supply and delivery of the Eskom BESS projects. Through this RFI, Proconics is seeking information on the types of contractors/suppliers that are available in the area. From this, the information will be used to create shortlists and go out to specific people based on their submission. There is no guarantee that we will procure all these services within the local community, and we might still decide to split or combine some of the work packages depending on the responses we get.

## 3 Services Required

Proconics is seeking interested suppliers and contractors to assist with the supply of equipment, material, and services at both Graafwater and Paleisheuwel projects.

The following services would be required which will be further detailed in sections below:

- Supply of site camp facilities:
  - Parkhome/Container Site Offices
  - Parkhome/Container Boardrooms
  - Parkhome/Container Ablutions
  - Parkhome/Container Kitchen
- Fencing of site camps
- Security
- Safety Equipment (PPE)
- Waste Management
- Bush Clearing
- Plumbing Services
- Electrical Installation Services
- Cleaning Consumables
- Sanitary Services
- IT Services





- Signage
- Water transportation
- Stationary
- Fuel supply and transportation
- Transport of personnel
- Civil Contractors
- Electrical and Mechanical Installation Contractors
- Reticulation Contractors

## 4 Minimum Criteria

Proconics will give preference to already established previously disadvantaged companies within the construction areas that can produce the following documentation as proof:

- Company Profile
- Company Track Record
- Company Registration
- Tax Clearance Certificate
- BBBEE Certification
- CIDB Registration (Civil and Electrical Contractors)
- CSD registration
- Letter of Good standing
- Safety Policy
- Quality Policy
- ISO Certifications
- Financial Statements upon request
- CVs of key personnel with organograms
- List of equipment/vehicles owned



## 5 Applications

Interested suppliers and subcontractors needs to provide us with the following documents:

- All the relevant company documents mentioned in Section 4
- Indication of which service or products they are interested in providing
- Indicative pricelists and rates for products and services
- Technical proposal, writeup or method statement to indicate how this service or product will be delivered or executed
- Any other documentation not mentioned that the supplier/contractor feels would benefit them in the evaluation process

Submission of applications to be sent to the following email address on or before:

**Closing Date:**

31 August 2022

**Email Address:**

[BESSpackage3A@proconics.co.za](mailto:BESSpackage3A@proconics.co.za)

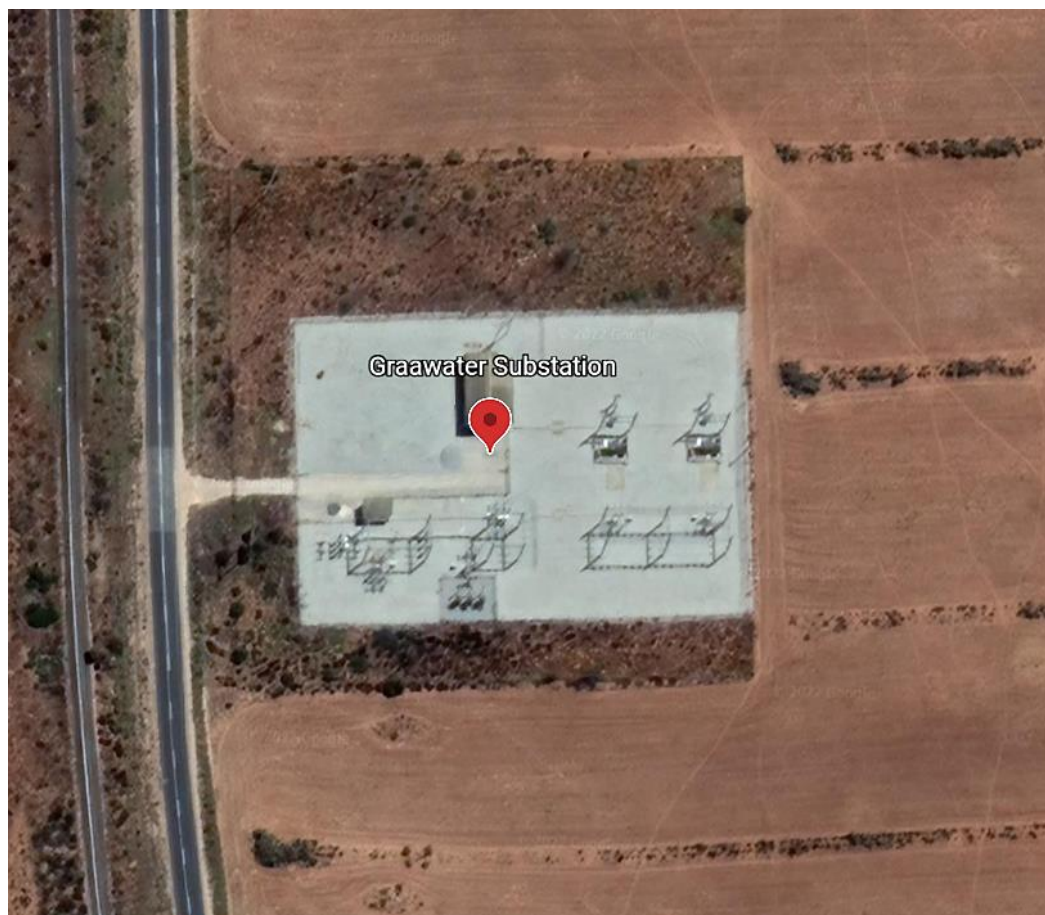
## 6 Site Locations

The general location and description of the sites are shown in Figure 1 and 2 below:

### 6.1 Graafwater

The general location and description of the site is shown in Figure 1 below:

- The site is in the Northern part of the Western Cape province close to a town called Graafwater
- The coordinates of the Graafwater substation as seen in Figure 1 are:  
32°10'57"S 18°35'59"E



**Figure 1: Existing Graafwater Substation and Site Camp Location**

## **6.2 Paleisheuvel**

- The site is in the Northern part of the Western Cape province close to a town called Sandberg and Het Kruis
- The coordinates of the Paleisheuvel substation as seen in Figure 1 are:  
 $32^{\circ}25'22''S 18^{\circ}44'07''E$

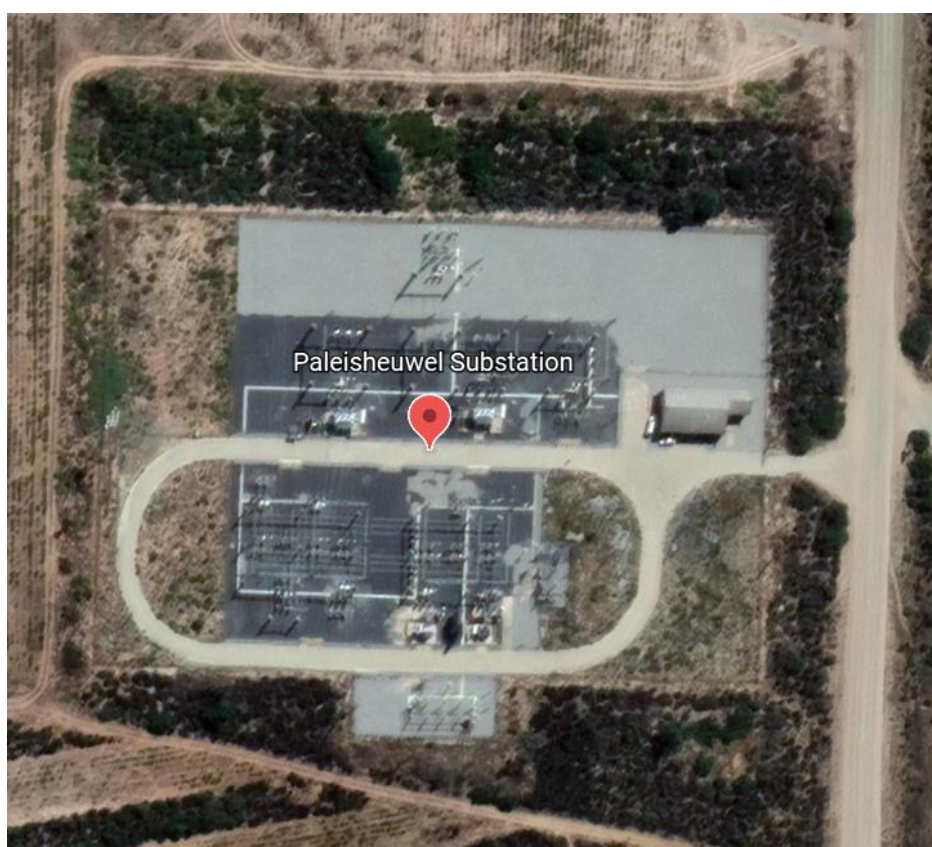


Figure 2: Existing Paleisheuwel Substation and Site Camp Location

## 7 Details of Services Required

### 7.1 Site Offices

The supply of offices facilities needs to be in accordance with the following requirements and stipulations for either Parkhome Units or Containerized Units:

#### 7.1.1 Parkhome Units

Length (mm)	Width (mm)	Height (mm)	Electrics	Windows	Floor	Wall Insulation	Roof Insulation	Aircon
5820	2990	2910	Incl	Aluminium	Vinyl	Yes	Yes	Yes

Each unit to include at least the following minimum:

- 1 x Lockable Door
- 2 x Windows (Openable)
- 1 x 12000BTU Aircon



- 2 x Electrical Points
- 1 x DB Board
- 2 x Fluorescent Light or Equivalent

### 7.1.2 Steel Container Units

Length (mm)	Width (mm)	Height (mm)	Electrics	Windows	Floor & Outside	Wall Insulation	Roof Insulation	Aircon
5896	2350	2393	Incl	Steel	Painted	Yes	Yes	Yes

Each unit to include at least the following minimum:

- 1 x Lockable Door
- 2 x Windows (Openable)
- 1 x 12000BTU Aircon
- 2 x Electrical Points
- 1 x DB Board
- 2 x Fluorescent Light or Equivalent

## 7.2 Boardrooms

The supply of boardroom facilities needs to be in accordance with the following requirements and stipulations for either Parkhome Units or Containerized Units:

### 7.2.1 Parkhome Units (Double Volume)

Length (mm)	Width (mm)	Height (mm)	Electrics	Windows	Floor	Wall Insulation	Roof Insulation	Aircon
5820	7000	2910	Incl	Aluminium	Vinyl	Yes	Yes	Yes

Each unit to include at least the following minimum:

- 1 x Lockable Door
- 2 x Windows (Openable)
- 1 x 12000BTU Aircon
- 2 x Electrical Points
- 1 x DB Board



- 2 x Fluorescent Light or Equivalent

### 7.2.2 Steel Container Units

Length (mm)	Width (mm)	Height (mm)	Electrics	Windows	Floor & Outside	Wall Insulation	Roof Insulation	Aircon
5896	2350	2393	Incl	Steel	Painted	Yes	Yes	Yes

Each unit to include at least the following minimum:

- 1 x Lockable Door
- 2 x Windows (Openable)
- 1 x 12000BTU Aircon
- 2 x Electrical Points
- 1 x DB Board
- 2 x Fluorescent Light or Equivalent

## 7.3 Ablutions

The supply of ablution facilities needs to be in accordance with the following requirements and stipulations for either Parkhome Units or Containerized Units:

### 7.3.1 Parkhome Units

Length (mm)	Width (mm)	Height (mm)	Electrics	Windows	Floor	Wall Insulation	Roof Insulation
5820	2990	2910	Lights	Aluminium	Water Resistant	Yes	Yes

Each unit to include at least the following minimum:

- 1 x Lockable Door
- 2 x Windows (Openable)
- 2 x Fluorescent Light or Equivalent
- 2 x Flush Toilets in Stalls
- 2 x Urinals
- 1 x Hand Basin



- Full plumbing with outlet to connect main sewer outlet

### 7.3.2 Steel Container Units

Length (mm)	Width (mm)	Height (mm)	Electrics	Windows	Floor & Outside	Wall Insulation	Roof Insulation
5896	2350	2393	Lights	Steel	Water Resistant	Yes	Yes

Each unit to include at least the following minimum:

- 1 x Lockable Door
- 2 x Windows (Openable)
- 2 x Fluorescent Light or Equivalent
- 2 x Flush Toilets in Stalls
- 2 x Urinals
- 1 x Hand Basin
- Full plumbing with outlet to connect main sewer outlet

## 7.4 Kitchen

The supply of kitchen facilities needs to be in accordance with the following requirements and stipulations for either Parkhome Units or Containerized Units:

### 7.4.1 Parkhome Units

Length (mm)	Width (mm)	Height (mm)	Electrics	Windows	Floor	Wall Insulation	Roof Insulation	Aircon
5820	2990	2910	Incl	Aluminium	Vinyl	Yes	Yes	Yes

Each unit to include at least the following minimum:

- 1 x Lockable Door
- 2 x Windows (Openable)
- 1 x 12000BTU Aircon
- 2 x Electrical Points
- 1 x DB Board



- 2 x Fluorescent Light or Equivalent
- Dish Washing Basin with built in cupboards
- Fixed cupboard with workspace for preparing of coffee, tea, and light lunches
- Kwikot Under Counter/Outside Geyser

#### 7.4.2 Steel Container Units

Length (mm)	Width (mm)	Height (mm)	Electrics	Windows	Floor & Outside	Wall Insulation	Roof Insulation	Aircon
5896	2350	2393	Incl	Steel	Painted	Yes	Yes	Yes

Each unit to include at least the following minimum:

- 1 x Lockable Door
- 2 x Windows (Openable)
- 1 x 12000BTU Aircon
- 2 x Electrical Points
- 1 x DB Board
- 2 x Fluorescent Light or Equivalent
- Dish Washing Basin with built in cupboards
- Fixed cupboard with workspace for preparing of coffee, tea and light lunches
- Kwikot Under Counter/Outside Geyser

#### 7.5 Optional Extras

The following list of items might be required as optional extras for consideration either as a rental or permanent purchase:

- Window Fly Screens
- Window Blinds
- Safety Gate for Door
- Office Desk (Corner Unit)
- Office Chair
- Boardroom Desks
- Boardroom Chairs





- Filing Cabinet
- Drawing Rack
- Cutlery and Crockery for Kitchen

## 7.6 Delivery and Collection

The supplier will be required to supply all transport and craneage for the delivery and collection of each unit supplied. All permits related to transportation of the units to be the responsibility of the supplier.

## 8 Fencing of Site Camps

For each construction project a site camp will be establish and require the installation of a security fence on the perimeter thereof.

### 8.1 Typical Site Camp Layout

The location of the site camps is still to be finalized but will be locate inside the footprint of the existing Eskom substation perimeter. Both sites will have a similar layout and fence length requirement as shown in Figure 3 below.

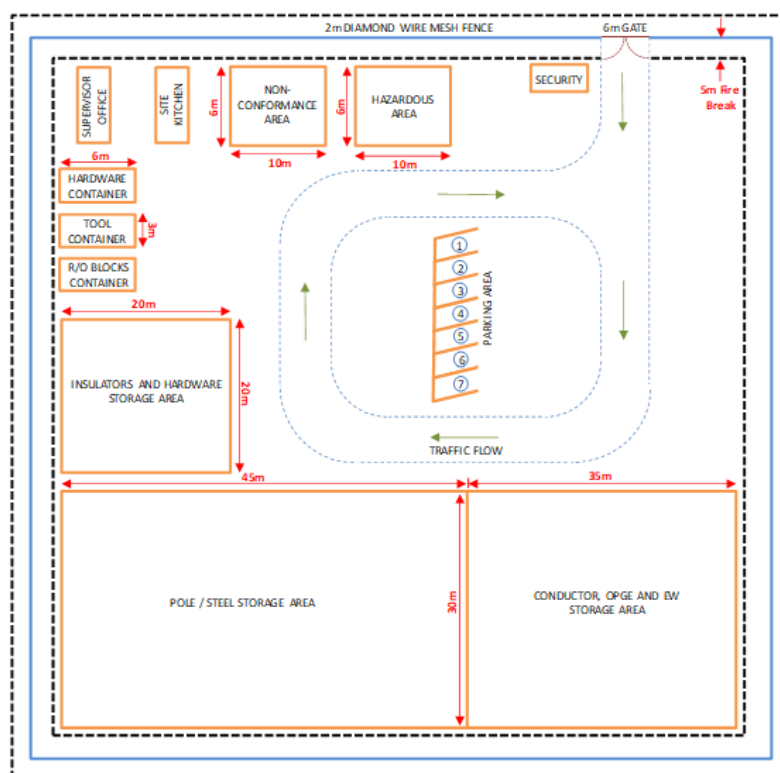


Figure 3: Typical Layout of Site Camp



## 8.2 Fence Requirements

The supplier will be expected to supply the following minimum services with regards to the site fence:

- Supply of the following material:
  - Corner posts
  - Intermediate posts
  - Stays
  - Diamond Mesh
  - Strand Wire
  - Tie Wire
  - Barbed Wire
  - Gates
- Transport of all material to site
- Supply of all plant, equipment and labour for installation
- All foundation materials
- Adherence to all site safety and environmental procedures
- All other materials and labour not mentioned above for a complete fence installation

## 9 Security

Security would be required at each site camp throughout the day as well as night time.

### 9.1 Security Requirements and Responsibilities

The security company will be expected to supply the following minimum services with regards to the security and access control at each site camp:

- Transport of Security Staff to and from site
- Day and Night Guards
- Guard Hut
- Breathalyzers
- Biometric Access Control System



- Boom Gate and Turnstile
- Two-way radios for communication to control room
- Backup support in the case of incident reported
- Responsibility of guards:
  - Access control onto site
  - Breathalysing of staff upon entry of site
  - Recording and record keeping of staff and vehicles
  - Patrolling of site perimeter fence and site camp

## 10 Safety Equipment (PPE)

To ensure the safety of all staff on site, there will be a requirement for the supply of PPE to all staff members and general labourers.

### 10.1 PPE Requirements

The following minimum PPE will be required on site throughout the project:

- Boots
- Overall Pants
- Overall Jackets
- Hard Hats
- Branding of PPE
- Safety Goggles
- Gloves
- Ear Protection
- Barrier Tape and Netting
- Rebar End Caps
- Safety Signage
- Fire Extinguishers
- Fire Beaters
- Drip Trays



## **11 Waste Management**

Site camp facilities such as site offices, boardrooms, ablutions, and kitchen units will generate general waste that will have to be sorted and recycled to comply with the Health and Hygiene standards.

### **11.1 Waste Management Requirement**

The service provider will be expected to supply the following minimum services with regards to the collection and disposal of waste:

- Supply of the following consumables:
  - Dustbins
  - Wheelie bins
  - Waste Skips
- Supply and delivery thereof at sites
- Disposal of refuse and waste to all site safety and environmental procedures

## **12 Bush Clearing**

Before site camp facilities and fencing can be done, the laydown area and BESS area will need to be bush cleared as per EMP requirements and standards.

### **12.1 Bush Clearing Requirements**

The contractor will be expected to supply the following minimum services with regards to the bush clearing of the site camp and BESS areas:

- Supply all plant and material to conduct bush clearing
- Have the necessary safety and environmental file setup based on clients' documents
- All required PPE
- Removal of grass, vegetation and de-stumping of trees and bushes in accordance with EMPR
- Full compliance to environmental management plans



## 13 Plumbing

With the supply of site camp facilities such as ablutions and kitchen units, there is a requirement for water and sewage connections to be done.

### 13.1 Water Connection

The supplier will be expected to supply the following minimum services with regards to the water connection:

- Supply of the following material:
  - Water Tanks
  - Pressure Pumps
  - Pipes and Relevant Fittings
  - Water filtration units
- Transport of all material to site
- Supply of all plant, equipment, and labour for installation
- All trenching of pipes if required
- Adherence to all site safety and environmental procedures
- All other materials and labour not mentioned above for a complete water connection to all units identified

### 13.2 Sewage Connection

The supplier will be expected to supply the following minimum services with regards to the sewage connection:

- Supply of the following material:
  - Septic Tanks
  - Pipes and Relevant Fittings
- Transport of all material to site
- Supply of all plant, equipment, and labour for installation
- All trenching and excavations of pipes and septic tanks
- Adherence to all site safety and environmental procedures
- All other materials and labour not mentioned above for a complete sewage connection to all units identified



## 14 Electrical Installation Services

With the supply of site camp facilities such as site offices, boardrooms, ablutions and kitchen units, there is a requirement for electrical connections to be done between all units and a central metered distribution board. This distribution board will either be fed via an on-site generator or existing municipal connection. Perimeter lighting might also be required depending on final site camp layout.

### 14.1 Site Camp Electrification

The supplier will be expected to supply the following minimum services with regards to the site camp electrification:

- Supply of the following material:
  - Power Cables
  - Isolators
  - Earth Leakage
  - Glands
  - Shrouds
  - Surface Mount DB (IP Rated)
- Transport of all material to site
- Supply of all plant, equipment, and labour for installation
- All trenching of power cables if required
- Adherence to all site safety and environmental procedures
- All other materials and labour not mentioned above for the complete electrification of the site camp
- Supply of COC after completion

## 15 Cleaning Service and Consumables

Site camp facilities such as site offices, boardrooms, ablutions, and kitchen units will have to be maintained and cleaned on a daily basis to comply with the Health and Hygiene standards.



## 15.1 Consumables Requirement

The supplier will be expected to supply the following minimum services with regards to the cleaning and upkeep of facilities:

- Supply of the following consumables:
  - Brooms
  - Mops
  - Buckets
  - Dusters
  - Surface Cleaning Chemicals
  - Floor Cleaning Chemicals
  - Hand Wash
  - Sanitizer
  - Toilet Cleaning Chemicals
  - Toilet Paper
  - Kitchen Cleaning Chemicals
  - Eco friendly septic tank chemicals
- Supply and delivery thereof at sites
- Sweeping, dusting, and cleaning of site offices and boardrooms
- Sweeping, cleaning, and sanitizing of ablutions including restocking of consumables
- Disposal of refuse and waste to all site safety and environmental procedures
- All other materials and consumables not mentioned above that could be required for the cleaning and upkeep of the site camp area

## 16 Sanitary Services

With the supply of site camp facilities such as ablutions and kitchen units, there is a requirement for grey water and sewage treatment and removal from site.

### 16.1 Sewage and Grey Water Removal

The supplier will be expected to supply the following minimum services with regards to the removal of all sewage and grey water from site:

- Certified for the collection, transport, and removal of sewage



- Extraction of sewage and grey water from underground containment tanks by means of “honeysucker”
- Supply of Eco-friendly septic tank chemicals to enhance breakdown of solids and reduce odours
- Removal and transportation of sewage to a registered municipal treatment works
- Supply of proof for the correct disposal of sewage
- Adherence to all site safety and environmental procedures
- Any other required materials and labour for the safe collection and disposal of sewage and grey water

## 17 IT Services

With the setup of site camp facilities such as site offices, boardrooms, ablutions, and kitchen units there will be a requirement for IT services to assist the project management with their day to day works and communication with head office.

### 17.1 IT Services Required

The supplier will be expected to supply the following minimum services with regards to the setup of IT services in and around the site camp:

- Internet Connection (> 20Mb Uncapped Data)
  - Supply of hardware (Once Off)
  - Month to Month data subscription
- Network Switches and LAN Cables to each office and boardroom
- Supply of Projectors, TV's and Cameras for conferencing and meetings in boardroom
- CCTV installation for security and construction progress recording
- Liaison with Proconics IT department for on-site assistance for laptop and equipment setup and repairs
- Supply/Rental and servicing of bulk volume printers

## 18 Signage

Throughout the site camp setup and construction stages there will be a requirement for the supply of signage.





## 18.1 Signage Requirements

The supplier will be expected to supply the following minimum services with regards to the supply of signage through the project lifecycle:

- Site Camp
  - Construction Notice Boards
  - Safety and Warning Signage
- Construction
  - Substation Equipment Signage
  - BESS area Equipment Signage
  - Cable Tags and Labels
- All labels to comply with Eskom standards and procedures to be issued at a later stage.

## 19 Water Transportation

With no permanent connection to a municipal water connection there will be a requirement for water to be carted to site for construction use as well as use for general non consumption use within the site camp area.

### 19.1 Water Transportation Requirements

The supplier will be expected to supply the following minimum services with regards to the transportation of water to site:

- Certified vehicle for the collection and transportation of water
- Pumping of water into construction bowsers or water tanks
- Keep record of water collected and transported from registered collection points as confirmed by Department of Water and Sanitation
- Adherence to all site safety and environmental procedures
- Any other required materials and labour for the safe collection and transportation of water



## 20 Stationary

There will be a requirement for stationary supply to enable the site management and office to conduct their daily activities and reporting.

### 20.1 Stationary Requirements

The supplier will be expected to supply the following minimum services with regards to stationary required on site:

- Supply of but not limited to the following material:
  - A4 and A3 Paper
  - Pens and Pencils
  - Staplers and Punches
  - Files
  - Document Sleeves

## 21 Fuel supply and transportation

With the sites being some distance from towns there might be a requirement for fuel to be transported to site for the use with daily construction works. A possible agreement could also be made with a local service station within town for all construction vehicles to be filled up when the vehicles go into town.

### 21.1 Fuel Transportation and Supply Requirements

The supplier will be expected to supply the following minimum services with regards to the transportation and supply of fuel to site:

- Have the necessary permits in place for the transportation of fuel
- Certified vehicle for the collection and transportation of fuel
- Pumping of fuel into construction bowsers or water tanks
- Pumps to be calibrated and certified
- Keep record and proof of all fuel supplied and transported
- Adherence to all site safety and environmental procedures
- Have the necessary firefighting equipment and drip trays



- Any other required permits we might not be aware of required for transport and supply of fuel

## **22 Transport of personnel**

With the sites being some distance from towns there will be a requirement for transportation of personnel to and from site every day which might be extended to some weekends. Should the local taxi association already be established in the area and or the routes between town and the site, preference will be given to them.

### **22.1 Transportation of personnel requirements**

The supplier will be expected to supply the following minimum services with regards to the transportation of personnel to and from site:

- Have the necessary permits in place for the transportation of people
- Registered vehicle for the collection and transportation of people
- All seats to have the required three-point safety belts
- Drivers to be breathalysed at random
- Repair and maintenance of vehicles

## **23 Civil Contractors**

Proconics will require the services of a civil company for the supply and installation of all the bulk civil works on site. The successful civil company needs to be well established and have a track record of previous similar works completed.

### **23.1 Civil Contractor Scope**

The scope of work could comprise of but not limited to the following supply and installation of material for:

- Roads
- Substation and BESS area Platform
- Equipment Foundations
- Trenching
- Buildings
- Earthing



- Fencing
- Curbing
- Herbicides and Insecticides
- The Contractor shall supply, transport, and off-load off all material and equipment necessary for completing all the civil works.

## **23.2 Civil Approach**

Proconics will give preference to already established companies within the construction areas and can produce all the documentation as listed in Section 4. Based on this minimum documentation the main civil subcontractor will need to have a Level 2 or higher BBBEE certificate, CIDB Registration of at least a 9CE, ISO Certification with a detailed company safety and quality policy. The contractor will also be expected to be in a financial position to supply performance bonds as security for this package. These requirements are dictated and based on the civil package value and contractual requirements.

Companies that didn't qualify to be considered as the main civil contractor will however get a second chance to partake in the project. The main civil contractor will be expected based on their discretion to break down the civil activities into further work packages. This will allow the inclusion of smaller civil companies to still partake in the execution of this project under the main civil contractor.

## **24 Electrical and Mechanical Installation Contractors**

Proconics will require the services of an electrical company for the supply and installation of electrical equipment on site. The electrical company needs to be well established and have a track record of previous similar works completed.

### **24.1 Electrical Contractor Scope**

The scope of work could comprise of but not limited to the following supply and installation of material for:

- Earthing
- MV & LV Cables
- Steel Erection
- Primary HV Equipment installation



- Secondary Equipment
- Labelling
- The Contractor shall supply, transport, and off-load off all material and equipment necessary for completing all the electrical works.

## **24.2 Minimum Criteria**

Proconics will give preference to already established companies within the construction areas and can produce all the documentation as listed in Section 4. Based on this minimum documentation the main electrical subcontractor will need to have a Level 2 or higher BBBEE certificate, CIDB Registration of at least a 5EP, ISO Certification with a detailed company safety and quality policy. The contractor will also be expected to be in a financial position to supply performance bonds as security for this package. These requirements are dictated and based on the civil package value and contractual requirements.

The successful electrical contractor will also be requested to supply proof of Certifications from HV equipment OEMs for the installation of their equipment including proof of competence for the termination of MV cables.

## **25 Reticulation Contractors**

Proconics will require the services of an electrical reticulation company for the supply and installation of electrical HV, MV and LV cables on site. The electrical company needs to be well established and have a track record of previous similar works completed.

### **25.1 Electrical Contractor Scope**

The scope of work could comprise of but not limited to the following supply and installation:

- HV, MV and LV Cabling
- Earthing
- Optic Duct Fibre
- Terminations and Joints
- The Contractor shall supply, transport, and off-load off all material and equipment necessary for completing all the electrical works.



## **25.2 Minimum Criteria**

Proconics will give preference to already established companies within the construction areas and can produce all the documentation as listed in Section 4. Based on this minimum documentation the main reticulation subcontractor will need to have a Level 2 or higher BBBEE certificate, CIDB Registration of at least a 5EP, ISO Certification with a detailed company safety and quality policy. The contractor will also be expected to be in a financial position to supply performance bonds as security for this package. These requirements are dictated and based on the civil package value and contractual requirements.

The successful reticulation contractor will also be requested to supply proof of competence for the termination of MV cables.

## **26 Close Out**

The items described as listed above but not limited to will be required by Proconics for the successful completion of the projects. Successful suppliers and contractors will be contacted via official RFQ. All appointments will be made based on the discretion of Proconics and the guidelines of the contract framework we entered with our client. Proconics reserves the right to remove or combine certain scope into one without any notification or justification.